

Anti-RPRD1B antibody



Catalog Number: 100598

Product name

Anti-RPRD1B antibody

Immunogen

[Human RPRD1B \(His Tag\) recombinant protein](#)

Specificity

Human RPRD1B

Antibody description

Mouse monoclonal to RPRD1B

Preparation

This antibody was produced from a hybridoma resulting from the fusion of a mouse myeloma with B cells obtained from a mouse immunized with purified, recombinant Human RPRD1B (rh RPRD1B; AAH33629.1; Met1-Asp326). The IgG fraction of the cell culture supernatant was purified by Protein A affinity chromatography.

Formulation

0.2 µm filtered solution in PBS

Storage

This antibody can be stored at 2°C-8°C for one month without detectable loss of activity. Antibody products are stable for twelve months from date of receipt when stored at -20°C to -80°C.

Preservative-Free.

Sodium azide is recommended to avoid contamination (final concentration 0.05%-0.1%). It is toxic to cells and should be disposed of properly. Avoid repeated freeze-thaw cycles.

Clonality

Monoclonal

Ig Type

Mouse IgG2b

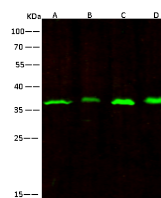
Applications

WB

Dilutions

WB: 2-10 µg/ml

Validations



Lanes	A	B	C	D
Items				
Sample (whole cell lysate)	Jurkat	Hela	HepG2	293T
Sample Volume (µg/lane)	30	30	30	30
Gel	13%SDS-PAGE reducing gel			
Recommended concentration	2-10 µg/ml			
Secondary Antibody	Dylight 800 Labeled Antibody to Mouse IgG (H+L) at 1:7500 dilution.			
Developed using Odyssey imaging system.				
Explanation	Predicted band size : 37 kDa Observed band size : 37 kDa			

RPRD1B Antibody, Mouse MAb, Western blot