

Anti-EphB6/Eph Receptor B6 antibody



Catalog Number: 100580

Product name

Anti-EphB6/Eph Receptor B6 antibody

Immunogen

[Human EphB6/Eph Receptor B6 \(His Tag\) recombinant protein](#)

Specificity

Human EphB6 / Eph Receptor B6

Antibody description

Rabbit polyclonal to EphB6/Eph Receptor B6

Preparation

Produced in rabbits immunized with purified, recombinant Human EphB6 / Eph Receptor B6 (rh EphB6 / Eph Receptor B6; NP_004436.1; Met1-Ser579). EphB6 / Eph Receptor B6 specific IgG was purified by Human EphB6 / Eph Receptor B6 affinity chromatography.

Formulation

0.2 µm filtered solution in PBS

Storage

This antibody can be stored at 2°C-8°C for one month without detectable loss of activity. Antibody products are stable for twelve months from date of receipt when stored at -20°C to -80°C.

Preservative-Free.

Sodium azide is recommended to avoid contamination (final concentration 0.05%-0.1%). It is toxic to cells and should be disposed of properly. Avoid repeated freeze-thaw cycles.

Clonality

Polyclonal

Ig Type

Rabbit IgG

Applications

ELISA, IHC-P

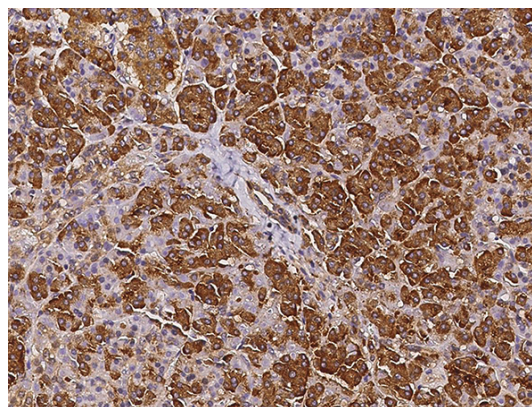
Dilutions

ELISA: 0.1-0.2 µg/ml

This antibody can be used at 0.1-0.2 µg/ml with the appropriate secondary reagents to detect Human EphB6 / Eph Receptor B6. The detection limit for Human EphB6 / Eph Receptor B6 is approximately 0.00975 ng/well.

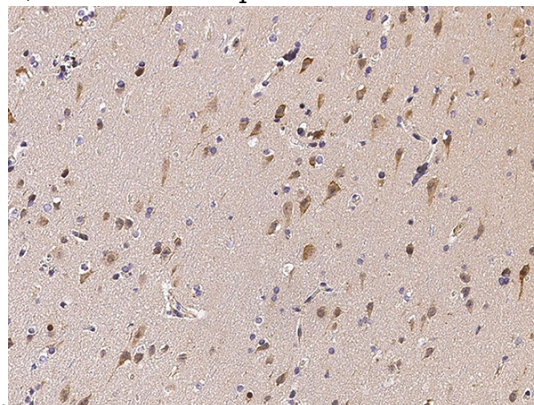
IHC-P: 0.1-2 µg/ml

Validations



EphB6 / Eph Receptor B6 Antibody, Rabbit PAb, Antigen Affinity Purified, Immunohistochemistry

Immunochemical staining of human EphB6 in human pancreas with rabbit polyclonal antibody (0.5 µg/mL, formalin-fixed paraffin embedded



sections).

EphB6 / Eph Receptor B6 Antibody, Rabbit PAb,

Anti-EphB6/Eph Receptor B6 antibody



Catalog Number: 100580

Antigen Affinity Purified, Immunohistochemistry

Immunochemical staining of human EphB6 in

human brain with rabbit polyclonal antibody (0.5 μ g/mL, formalin-fixed paraffin embedded sections).