

Anti-CGA/HCG antibody



Catalog Number: 100522

Product name

Anti-CGA/HCG antibody

Immunogen

[Human CGA/HCG \(His Tag\) recombinant protein](#)

Specificity

Human CGA / HCG

Antibody description

Rabbit polyclonal to CGA/HCG

Preparation

Produced in rabbits immunized with purified, recombinant Human CGA / HCG (rh CGA / HCG; NP_000726.1; Met1-Ser116). CGA / HCG specific IgG was purified by Human CGA / HCG affinity chromatography.

Formulation

0.2 μ m filtered solution in PBS

Storage

This antibody can be stored at 2°C-8°C for one month without detectable loss of activity. Antibody products are stable for twelve months from date of receipt when stored at -20°C to -80°C.

Preservative-Free.

Sodium azide is recommended to avoid contamination (final concentration 0.05%-0.1%). It is toxic to cells and should be disposed of properly. Avoid repeated freeze-thaw cycles.

Clonality

Polyclonal

Ig Type

Rabbit IgG

Applications

ELISA, WB

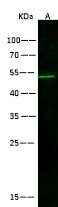
Dilutions

WB: 10-15 μ g/ml

ELISA: 0.1-0.2 μ g/mL

This antibody can be used at 0.1-0.2 μ g/mL with the appropriate secondary reagents to detect Human CGA / HCG. The detection limit for Human CGA / HCG is < 0.039 ng/well.

Validations



Lanes	A
Items	
Sample (whole cell lysate)	HepG2
Sample Volume (μ g/lane)	30
Gel	13% SDS-PAGE reducing gel
Recommended Concentration	10-15 μ g/ml
Secondary Antibody	Dylight 800-labeled Antibody To Rabbit IgG (H+L), at 1:5000 dilution
Developed using Odyssey imaging system.	
Explanation	Predicted band size : 51 kDa Observed band size : 51 kDa

CGA / HCG Antibody, Rabbit PAb, Antigen Affinity Purified, Western blot