

Anti-Carboxypeptidase A2/CPA2 antibody



Catalog Number: 100427

Product name

Anti-Carboxypeptidase A2/CPA2 antibody

Immunogen

[Mouse Carboxypeptidase A2/CPA2 \(His Tag\) recombinant protein](#)

Specificity

Mouse Carboxypeptidase A2 / CPA2

No cross-reactivity in ELISA with Mouse CPA1; Mouse CPB1

Antibody description

Rabbit monoclonal to Carboxypeptidase A2/CPA2

Preparation

This antibody was obtained from a rabbit immunized with purified, recombinant Mouse Carboxypeptidase A2 / CPA2 (rM Carboxypeptidase A2 / CPA2; Q504N0; Met1-Tyr417).

Formulation

0.2 µm filtered solution in PBS

Storage

This antibody can be stored at 2°C-8°C for one month without detectable loss of activity. Antibody products are stable for twelve months from date of receipt when stored at -20°C to -80°C. Preservative-Free. Sodium azide is recommended to avoid

contamination (final concentration 0.05%-0.1%). It is toxic to cells and should be disposed of properly. Avoid repeated freeze-thaw cycles.

Clonality

Monoclonal

Ig Type

Rabbit IgG

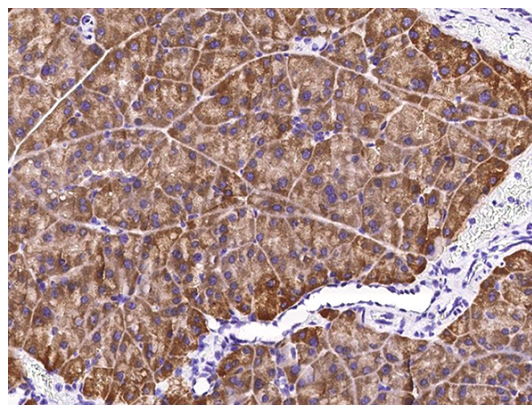
Applications

IHC-P

Dilutions

IHC-P: 1-10 µg/mL

Validations



Carboxypeptidase A2 / CPA2 Antibody, Rabbit MAb, Immunohistochemistry

Immunochemical staining of mouse CPA2 in mouse pancreas with rabbit monoclonal antibody (5 µg/mL, formalin-fixed paraffin embedded sections).