

# Anti-POU2F1 antibody



Catalog Number: 100404

## Product name

Anti-POU2F1 antibody

## Specificity

Human POU2F1

## Antibody description

Rabbit polyclonal to POU2F1

## Preparation

Produced in rabbits immunized with a synthetic peptide corresponding to the N-terminus of the human POU2F1, and purified by antigen affinity chromatography.

## Formulation

0.2 µm filtered solution in PBS

## Storage

This antibody can be stored at 2°C-8°C for one month without detectable loss of activity. Antibody products are stable for twelve months from date of receipt when stored at -20°C to -80°C.

Preservative-Free.

Sodium azide is recommended to avoid contamination (final concentration 0.05%-0.1%). It is toxic to cells and should be disposed of properly. Avoid repeated freeze-thaw cycles.

## Clonality

Polyclonal

## Ig Type

Rabbit IgG

## Applications

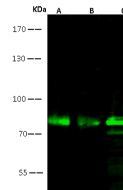
WB, IF, ICC/IF

## Dilutions

WB: 5-10 µg/ml

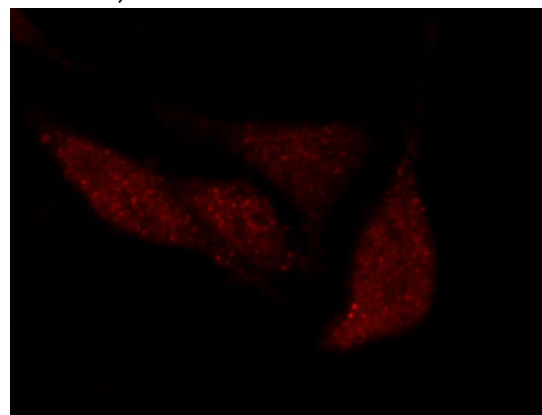
ICC/IF: 0.5-1.5 µg/ml

## Validations



Lanes	A	B	C
Sample (whole cell lysate)	K562	Hela	Jurkat
Sample Volume (µg/lane)	30	30	30
Gel	7.5% SDS-PAGE reducing gel		
Recommended Concentration	5-10 µg/ml		
Secondary Antibody	Dylight 800 labeled Antibody to Rabbit IgG (H+L), at 1:5000 dilution.		
Explanation	Developed using Odyssey imaging system. Predicted band size : 76 kDa Observed band size : 76 kDa Additional bands at : 70 kDa (We are unsure as to the identity of these extra bands. )		

POU2F1 Antibody, Rabbit PAb, Antigen Affinity Purified, Western blot



POU2F1 Antibody, Rabbit PAb, Antigen Affinity Purified, Immunofluorescence

Immunofluorescence staining of POU2F1 in HeLa cells. Cells were fixed with 4% PFA, permeabilized with 0.3% Triton X-100 in PBS, blocked with 10% serum, and incubated with rabbit anti-human POU2F1 polyclonal antibody (1 µg/ml) at 4°C overnight. Then cells were stained with the Alexa Fluor® 594-conjugated Goat Anti-rabbit IgG secondary antibody (red). Positive staining was localized to nucleus.