

Anti-STUB1 antibody



Catalog Number: 100393

Product name

Anti-STUB1 antibody

Specificity

Human STUB1

Antibody description

Rabbit monoclonal to STUB1

Preparation

This antibody was obtained from a rabbit immunized with purified, recombinant Human STUB1 isoform 1 (Q9UNE7-1; Met 1-Tyr 303).

Formulation

0.2 µm filtered solution in PBS

Storage

This antibody can be stored at 2°C-8°C for one month without detectable loss of activity. Antibody products are stable for twelve months from date of receipt when stored at -20°C to -80°C. Preservative-Free.

Sodium azide is recommended to avoid contamination (final concentration 0.05%-0.1%). It is toxic to cells and should be disposed of properly. Avoid repeated freeze-thaw cycles.

Clonality

Monoclonal

Ig Type

Rabbit IgG

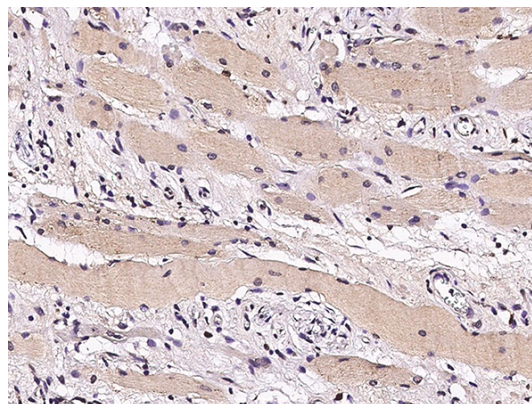
Applications

IHC-P

Dilutions

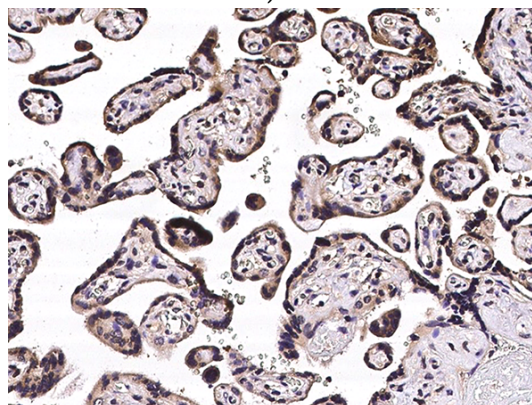
IHC-P: 1-10 µg/mL

Validations



STUB1 Antibody, Rabbit MAb,
Immunohistochemistry

Immunochemical staining of human STUB1 in human skeletal muscle with rabbit monoclonal antibody (5 µg/mL, formalin-fixed paraffin embedded sections).



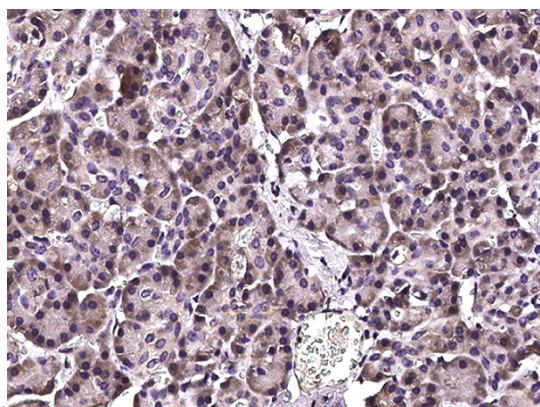
STUB1 Antibody, Rabbit MAb,
Immunohistochemistry

Immunochemical staining of human STUB1 in human placenta with rabbit monoclonal antibody (5 µg/mL, formalin-fixed paraffin embedded)

Anti-STUB1 antibody



Catalog Number: 100393



STUB1 Antibody, Rabbit MAb,
Immunohistochemistry

Immunochemical staining of human STUB1 in
human pancreas with rabbit monoclonal antibody
(5 µg/mL, formalin-fixed paraffin embedded
sections).

sections).