

Anti-PERP1 / MZB1 antibody



Catalog Number: 100369

Product name

Anti-PERP1 / MZB1 antibody

Immunogen

[Human PERP1 / MZB1 \(His Tag\) recombinant protein](#)

Specificity

Human PERP1 / MZB1

Antibody description

Rabbit polyclonal to PERP1 / MZB1

Preparation

Produced in rabbits immunized with purified, recombinant Human PERP1 / MZB1 (rh PERP1 / MZB1; Q8WU39-1; Met 1- Thr 185). PERP1 / MZB1 specific IgG was purified by Human PERP1 / MZB1 affinity chromatography.

Formulation

0.2 µm filtered solution in PBS

Storage

This antibody can be stored at 2°C-8°C for one month without detectable loss of activity. Antibody products are stable for twelve months from date of receipt when stored at -20°C to -80°C. Preservative-Free.

Sodium azide is recommended to avoid contamination (final concentration 0.05%-0.1%). It is toxic to cells and should be disposed of properly. Avoid repeated freeze-thaw cycles.

Clonality

Polyclonal

Ig Type

Rabbit IgG

Applications

ELISA, WB, IHC-P, IP

Dilutions

WB: 2-10 µg/ml

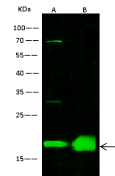
ELISA:0.1-0.2 µg/mL

This antibody can be used at 0.1-0.2 µg/mL with the appropriate secondary reagents to detect Human PERP1 / MZB1. The detection limit for Human PERP1 / MZB1 is < 0.039 ng/well.

IHC-P: 0.1-1 µg/ml

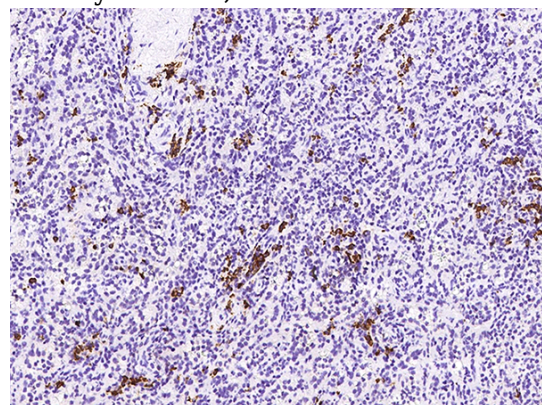
IP: 1-4 µg/mg of lysate

Validations



Lanes	A	B
Items		
Sample [whole cell lysate]	Molt4	Raji
Sample Volume (µg/lane)	30	30
Gel	13% SDS-PAGE reducing gel	
Recommended Concentration	2-10µg/ml	
Secondary Antibody	DyLight 800 labeled Antibody to Rabbit IgG [1:1], at 1:5000 dilution	
Developed using Odyssey imaging system		
Explanation	Predicted band size : 21 kDa Observed band size : 18 kDa Additional bands at : 69 kDa and 29 kDa (We are unsure as to the identity of these extra bands. They are possible non-specific bindings)	

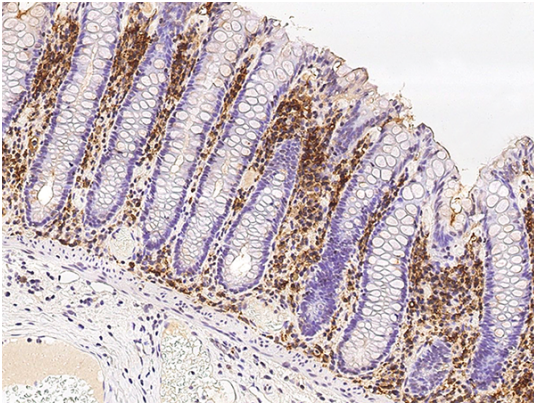
PERP1 / MZB1 Antibody, Rabbit PAb, Antigen Affinity Purified, Western blot



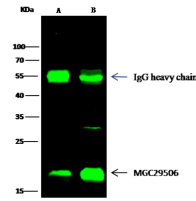
PERP1 / MZB1 Antibody, Rabbit PAb, Antigen Affinity Purified, Immunohistochemistry

Anti-PERP1 / MZB1 antibody

Catalog Number: 100369



PERP1 / MZB1 Antibody, Rabbit PAb, Antigen Affinity Purified, Immunohistochemistry



Items	Lanes	A	B
Sample (whole cell lysate)		raji	Daudi
Sample quantity		0.5 mg	
IP antibody quantity		2 µg	
Protein G agarose		15 µl of 50% Protein G Agarose	
Gel		13% SDS-PAGE reducing gel	
Primary antibody		MGC29506 antibody at 5 µg/ml	
Secondary antibody		Dylight 800-labeled antibody to rabbit IgG (H+L), at 1:5000 dilution	

PERP1 / MZB1 Antibody, Rabbit PAb, Antigen Affinity Purified, Immunoprecipitation