

Anti-CUEDC2 antibody



Catalog Number: 100367

Product name

Anti-CUEDC2 antibody

Specificity

Human CUEDC2

Antibody description

Rabbit monoclonal to CUEDC2

Preparation

This antibody was obtained from a rabbit immunized with purified, recombinant Human CUEDC2.

Formulation

0.2 μ m filtered solution in PBS

Storage

This antibody can be stored at 2°C-8°C for one month without detectable loss of activity. Antibody products are stable for twelve months from date of receipt when stored at -20°C to -80°C.

Preservative-Free.

Sodium azide is recommended to avoid contamination (final concentration 0.05%-0.1%). It is toxic to cells and should be disposed of properly. Avoid repeated freeze-thaw cycles.

Clonality

Monoclonal

Ig Type

Rabbit IgG

Applications

ELISA, IHC-P

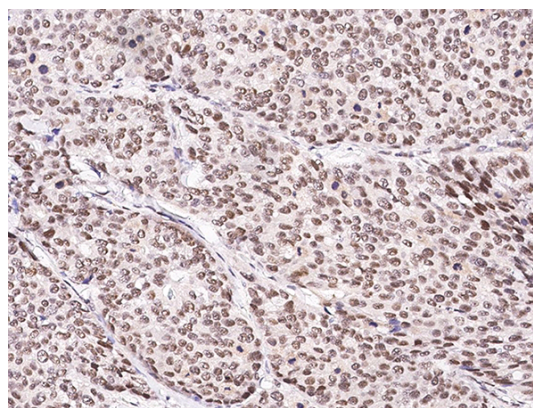
Dilutions

ELISA: 0.1-0.2 μ g/mL

This antibody can be used at 0.1-0.2 μ g/mL with the appropriate secondary reagents to detect Human CUEDC2. The detection limit for Human CUEDC2 is 0.00975 ng/well.

IHC-P: 1-10 μ g/mL

Validations



CUEDC2 Antibody, Rabbit MAb,
Immunohistochemistry

Immunochemical staining of human CUEDC2 in human breast carcinoma with rabbit monoclonal antibody (1 μ g/mL, formalin-fixed paraffin embedded sections).