

Anti-CUEDC2 antibody



Catalog Number: 100359

Product name

Anti-CUEDC2 antibody

Specificity

Human CUEDC2

Antibody description

Rabbit polyclonal to CUEDC2

Preparation

Produced in rabbits immunized with purified, recombinant Human CUEDC2. CUEDC2 specific IgG was purified by Human CUEDC2 affinity chromatography.

Formulation

0.2 µm filtered solution in PBS with 5% trehalose

Storage

This antibody can be stored at 2°C-8°C for one month without detectable loss of activity. Antibody products are stable for twelve months from date of receipt when stored at -20°C to -80°C.

Preservative-Free.

Sodium azide is recommended to avoid contamination (final concentration 0.05%-0.1%). It is toxic to cells and should be disposed of properly. Avoid repeated freeze-thaw cycles.

Clonality

Polyclonal

Ig Type

Rabbit IgG

Applications

ELISA, WB, IHC-P, IP

Dilutions

WB: 10-20 µg/ml

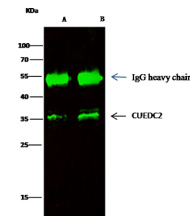
ELISA: 0.1-0.2 µg/mL

This antibody can be used at 0.1-0.2 µg/mL with the appropriate secondary reagents to detect Human CUEDC2. The detection limit for Human CUEDC2 is approximately 0.00975 ng/well.

IHC-P: 0.1-2 µg/mL

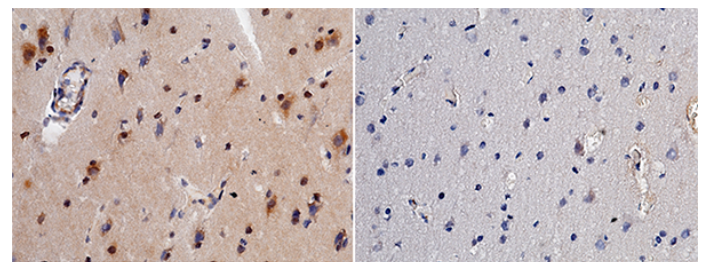
IP: 4-6 µg/mg of lysate

Validations



Items	Lanes	A	B
Sample (whole cell lysate)		Jurkat	Hela
Sample quantity			0.5 mg
IP antibody quantity			2 µg
Protein G agarose		15 µl of 50% Protein G Agarose	
Cell		15% SDS-PAGE reducing gel	
Primary antibody		CUEDC2 antibody at 10 µg/ml [Cat# 11466-RP02]	
Secondary antibody		DyLight 800-labeled antibody to rabbit IgG (H+L), at 1:5000 dilution.	

CUEDC2 Antibody, Rabbit PAb, Antigen Affinity Purified



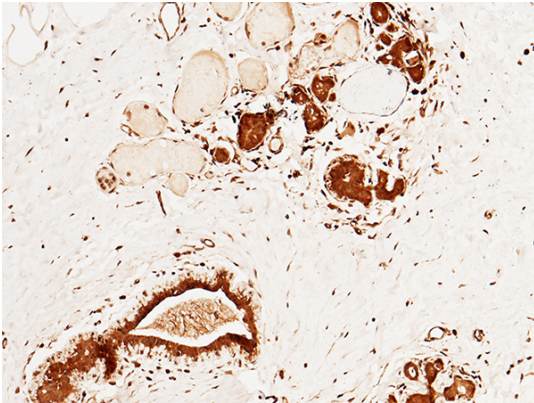
CUEDC2 Antibody +
CUEDC2 Antigen -

CUEDC2 Antibody, Rabbit PAb, Antigen Affinity Purified, Immunohistochemistry

Immunochemical staining of human CUEDC2 in human brain with rabbit polyclonal antibody (1 µg/mL, formalin-fixed paraffin embedded sections). The left panel: tissue incubated with primary antibody; The right panel: tissue incubated with the mixture of primary antibody and antigen (recombinant protein).

Anti-CUEDC2 antibody

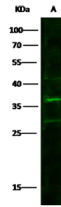
Catalog Number: 100359



CUEDC2 Antibody, Rabbit PAb, Antigen Affinity Purified, Immunohistochemistry

Immunochemical staining of human CUEDC2 in human breast carcinoma with rabbit polyclonal

antibody (1 $\mu\text{g}/\text{mL}$, formalin-fixed paraffin embedded sections).



Items	Lanes	A
Sample (whole cell lysate)		HeLa
Sample Volume ($\mu\text{g}/\text{lane}$)		30
Gel		13% SDS-PAGE reducing gel
Recommended Concentration		10-20 $\mu\text{g}/\text{ml}$
Secondary Antibody		Dylight 800-labeled Antibody To Rabbit IgG (H+L), at 1:5000 dilution.

CUEDC2 Antibody, Rabbit PAb, Antigen Affinity Purified, Western blot