

Anti-ENTPD5 antibody



Catalog Number: 100358

Product name

Anti-ENTPD5 antibody

Immunogen

[Human ENTPD5 \(His Tag\) recombinant protein](#)

Specificity

Human ENTPD5

Antibody description

Rabbit monoclonal to ENTPD5

Preparation

This antibody was obtained from a rabbit immunized with purified, recombinant Human ENTPD5 (rh ENTPD5; O75356; Met1-His428).

Formulation

0.2 μ m filtered solution in PBS

Storage

This antibody can be stored at 2°C-8°C for one month without detectable loss of activity. Antibody products are stable for twelve months from date of receipt when stored at -20°C to -80°C.

Preservative-Free.

Sodium azide is recommended to avoid contamination (final concentration 0.05%-0.1%). It is toxic to cells and should be disposed of properly. Avoid repeated freeze-thaw cycles.

Clonality

Monoclonal

Ig Type

Rabbit IgG

Applications

WB, IHC-P, IP

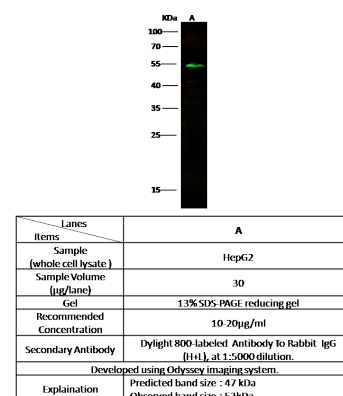
Dilutions

WB: 10-20 μ g/ml

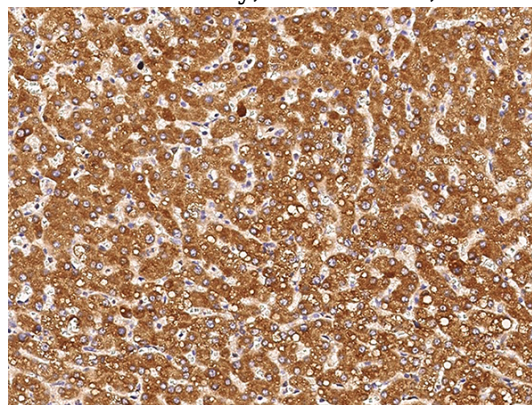
IHC-P: 1-10 μ g/mL

IP: 4-6 μ g/mg of lysate

Validations



ENTPD5 Antibody, Rabbit MAb, Western blot



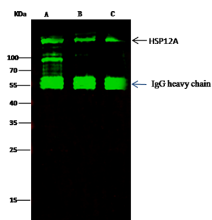
ENTPD5 Antibody, Rabbit MAb,
Immunohistochemistry

Immunochemical staining of human ENTPD5 in human liver with rabbit monoclonal antibody (5 μ g/mL, formalin-fixed paraffin embedded

Anti-ENTPD5 antibody



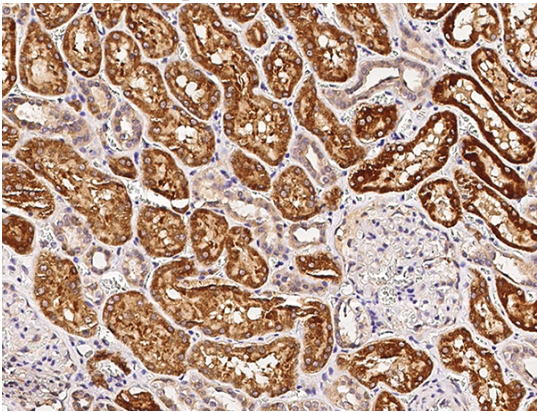
Catalog Number: 100358



Lanes	A	B	C
Items			
Sample (whole cell lysate)	MCF7	293T	HeLa
Sample quantity	0.5 mg		
IP antibody quantity	2 µg		
Protein G agarose	15 µl of 50% Protein G Agarose		
Gel	13% SDS-PAGE reductant gel		
Primary antibody	HSP12A antibody at 10 µg/ml [Cat# 11342-R201]		
Secondary antibody	Dylight 800-labeled antibody to rabbit IgG (H+L), at 1:5000 dilution.		

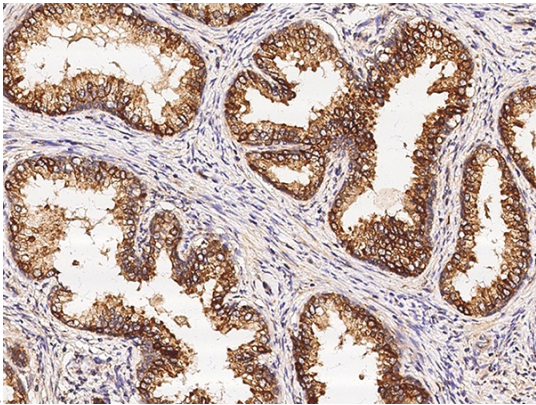
sections).

ENTPD5 Antibody, Rabbit MAb, Immunoprecipitation



ENTPD5 Antibody, Rabbit MAb, Immunohistochemistry

Immunochemical staining of human ENTDP5 in human kidney with rabbit monoclonal antibody (5 µg/mL, formalin-fixed paraffin embedded



sections).

ENTPD5 Antibody, Rabbit MAb, Immunohistochemistry

Immunochemical staining of human ENTDP5 in human prostate with rabbit monoclonal antibody (5 µg/mL, formalin-fixed paraffin embedded sections).