

Anti-YKL-39/CHI3L2 antibody



Catalog Number: 100355

Product name

Anti-YKL-39/CHI3L2 antibody

Immunogen

[Human YKL-39/CHI3L2 \(His Tag\) recombinant protein](#)

Specificity

Human YKL-39 / CHI3L2

Antibody description

Rabbit monoclonal to YKL-39/CHI3L2

Preparation

This antibody was obtained from a rabbit immunized with purified, recombinant Human YKL-39 / CHI3L2 (rh YKL-39 / CHI3L2; NP_003991.2; Met1-Leu390).

Formulation

0.2 μ m filtered solution in PBS

Storage

This antibody can be stored at 2°C-8°C for one month without detectable loss of activity. Antibody products are stable for twelve months from date of receipt when stored at -20°C to -80°C. Preservative-Free.

Clonality

Monoclonal

Ig Type

Rabbit IgG

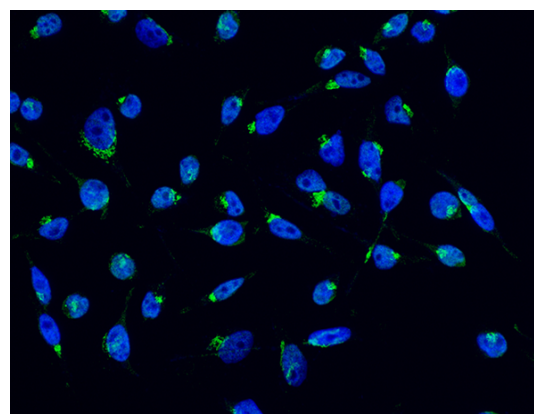
Applications

IF, ICC/IF

Dilutions

ICC/IF: 10-25 μ g/mL

Validations



YKL-39 / CHI3L2 Antibody, Rabbit MAb, Immunohistochemistry

Immunofluorescence staining of Human CHI3L2 in Hela cells. Cells were fixed with 4% PFA, permeabilized with 0.3% Triton X-100 in PBS, blocked with 10% serum, and incubated with rabbit anti-Human CHI3L2 monoclonal antibody (15 μ g/ml) at 37°C 1 hour. Then cells were stained with the Alexa Fluor® 488-conjugated Goat Anti-rabbit IgG secondary antibody (green) and counterstained with DAPI (blue). Positive staining was localized to cytoplasm.