

# Anti-ENTPD5 antibody



Catalog Number: 100351

## Product name

Anti-ENTPD5 antibody

## Immunogen

[Human ENTPD5 \(His Tag\) recombinant protein](#)

## Specificity

Human ENTPD5

## Antibody description

Rabbit polyclonal to ENTPD5

## Preparation

Produced in rabbits immunized with purified, recombinant Human ENTPD5 (rh ENTPD5; O75356; Met1-His428). ENTPD5 specific IgG was purified by Human ENTPD5 affinity chromatography.

## Formulation

0.2 µm filtered solution in PBS with 5% trehalose

## Storage

This antibody can be stored at 2°C-8°C for one month without detectable loss of activity. Antibody products are stable for twelve months from date of receipt when stored at -20°C to -80°C.

Preservative-Free.

Sodium azide is recommended to avoid contamination (final concentration 0.05%-0.1%). It is toxic to cells and should be disposed of properly. Avoid repeated freeze-thaw cycles.

## Clonality

Polyclonal

## Ig Type

Rabbit IgG

## Applications

ELISA, IHC-P

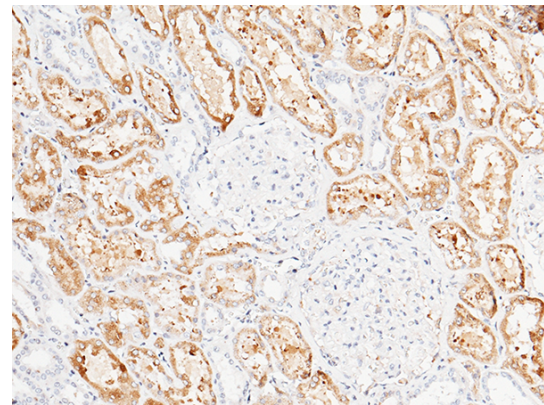
## Dilutions

ELISA: 0.1-0.2 µg/mL

This antibody can be used at 0.1-0.2 µg/mL with the appropriate secondary reagents to detect Human ENTPD5. The detection limit for Human ENTPD5 is approximately 0.039 ng/well.

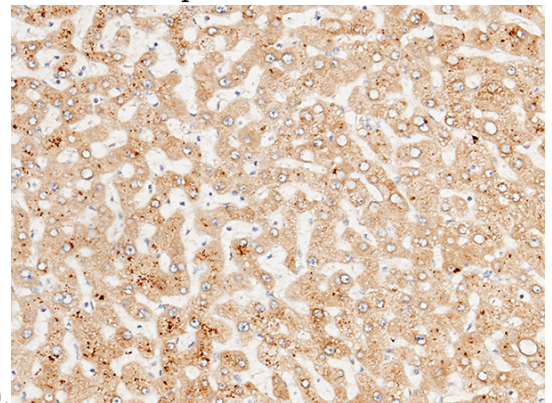
IHC-P: 0.1-2 µg/mL

## Validations



ENTPD5 Antibody, Rabbit PAb, Antigen Affinity Purified, Immunohistochemistry

Immunochemical staining of human ENTPD5 in human kidney with rabbit polyclonal antibody (1 µg/mL, formalin-fixed paraffin embedded



sections).

ENTPD5 Antibody, Rabbit PAb, Antigen Affinity Purified, Immunohistochemistry

Immunochemical staining of human ENTPD5 in

# Anti-ENTPD5 antibody



Catalog Number: 100351

---

human liver with rabbit polyclonal antibody (1  $\mu$ g/mL, formalin-fixed paraffin embedded

sections). Positive staining was localized to hepatocyte.