

# Anti-VNN1/Vanin-1 antibody



Catalog Number: 100341

## Product name

Anti-VNN1/Vanin-1 antibody

## Immunogen

[Mouse VNN1/Vanin-1 \(His Tag\) recombinant protein](#)

## Specificity

Mouse VNN1 / Vanin-1

## Antibody description

Rabbit polyclonal to VNN1/Vanin-1

## Preparation

Produced in rabbits immunized with purified, recombinant Mouse VNN1 / Vanin-1 (rM VNN1 / Vanin-1; Q9Z0K8; Met1-Ser487). VNN1 / Vanin-1 specific IgG was purified by Mouse VNN1 / Vanin-1 affinity chromatography.

## Formulation

0.2 µm filtered solution in PBS with 5% trehalose

## Storage

This antibody can be stored at 2°C-8°C for one month without detectable loss of activity. Antibody products are stable for twelve months from date of receipt when stored at -20°C to -80°C.

Preservative-Free.

Sodium azide is recommended to avoid contamination (final concentration 0.05%-0.1%). It is toxic to cells and should be disposed of properly. Avoid repeated freeze-thaw cycles.

## Clonality

Polyclonal

## Ig Type

Rabbit IgG

## Applications

ELISA, IHC-P

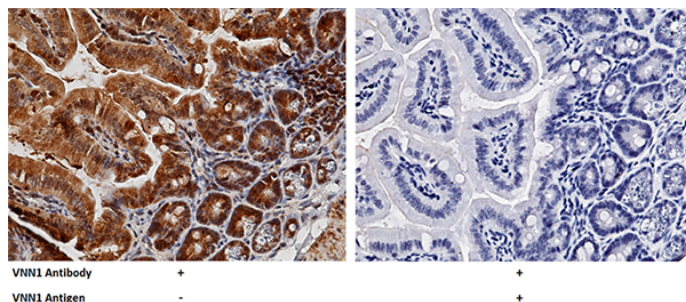
## Dilutions

ELISA: 0.1-0.2 µg/mL

This antibody can be used at 0.1-0.2 µg/mL with the appropriate secondary reagents to detect Mouse VNN1 / Vanin-1. The detection limit for Mouse VNN1 / Vanin-1 is approximately 0.039 ng/well.

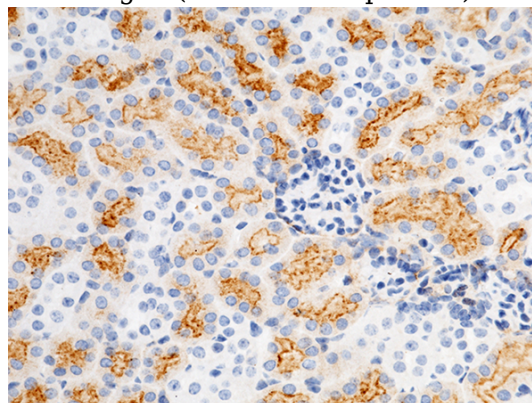
IHC-P: 0.1-2 µg/mL

## Validations



VNN1 / Vanin-1 Antibody, Rabbit PAb, Antigen Affinity Purified, Immunohistochemistry

Immunochemical staining of mouse VNN1 in mouse intestine with rabbit polyclonal antibody (1 µg/mL, formalin-fixed paraffin embedded sections). The left panel: tissue incubated with primary antibody; The right panel: tissue incubated with the mixture of primary antibody and antigen (recombinant protein).



# Anti-VNN1/Vanin-1 antibody



Catalog Number: 100341

---

VNN1 / Vanin-1 Antibody, Rabbit PAb, Antigen  
Affinity Purified, Immunohistochemistry

Immunochemical staining of mouse VNN1 in

mouse kidney with rabbit polyclonal antibody (1  
μg/mL, formalin-fixed paraffin embedded  
sections).