

Anti-PIM1 antibody



Catalog Number: 100183

Product name

Anti-PIM1 antibody

Specificity

Human PIM1

Antibody description

Rabbit polyclonal to PIM1

Preparation

Produced in rabbits immunized with a synthetic peptide corresponding to the N-terminus of the human PIM1, and purified by antigen affinity chromatography.

Formulation

0.2 µm filtered solution in PBS

Storage

This antibody can be stored at 2°C-8°C for one month without detectable loss of activity. Antibody products are stable for twelve months from date of receipt when stored at -20°C to -80°C.

Preservative-Free.

Sodium azide is recommended to avoid contamination (final concentration 0.05%-0.1%). It is toxic to cells and should be disposed of properly. Avoid repeated freeze-thaw cycles.

Clonality

Polyclonal

Ig Type

Rabbit IgG

Applications

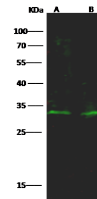
WB, IF, ICC/IF

Dilutions

WB: 10-30 µg/ml

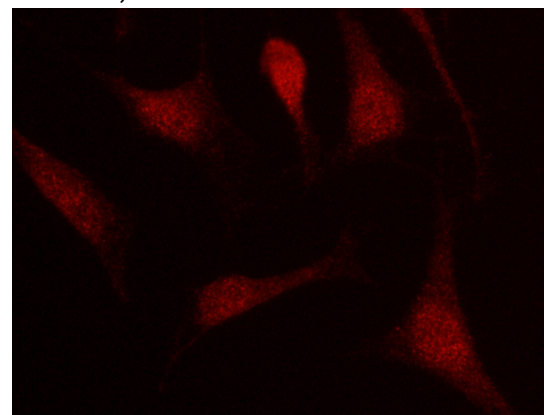
ICC/IF: 0.5-1.5 µg/mL

Validations



Items	Lanes	A	B
Sample (whole cell lysate)		Jurkat	U937
Sample volume (µg/lane)		30	30
Gel		13% SDS-PAGE reducing gel	
Recommended Concentration		10-30 µg/ml	
Secondary Antibody		Dylight 800 labeled Antibody to Rabbit IgG (H+L), at 1:5000 dilution.	
Developed using Odyssey imaging system			
Explanation		Predicted band size : 45 kDa	Observed band size : 32 kDa

PIM1 Antibody, Rabbit PAb, Antigen Affinity Purified, Western blot



PIM1 Antibody, Rabbit PAb, Antigen Affinity Purified, Immunofluorescence

Immunofluorescence staining of PIM1 in HeLa cells. Cells were fixed with 4% PFA, permeabilized with 0.3% Triton X-100 in PBS, blocked with 10% serum, and incubated with rabbit anti-human PIM1 polyclonal antibody (1 µg/ml) at 4°C overnight. Then cells were stained with the Alexa Fluor® 594-conjugated Goat Anti-rabbit IgG secondary antibody (red). Positive staining was localized to cytoplasm and nucleus.