

Anti-KRT7 / Cytokeratin-7 antibody



Catalog Number: 100178

Product name

Anti-KRT7 / Cytokeratin-7 antibody

Specificity

Human KRT7

Antibody description

Rabbit polyclonal to KRT7 / Cytokeratin-7

Preparation

Produced in rabbits immunized with a synthetic peptide corresponding to the center region of the human KRT7, and purified by antigen affinity chromatography.

Formulation

0.2 µm filtered solution in PBS

Storage

This antibody can be stored at 2°C-8°C for one month without detectable loss of activity. Antibody products are stable for twelve months from date of receipt when stored at -20°C to -80°C.

Preservative-Free.

Sodium azide is recommended to avoid contamination (final concentration 0.05%-0.1%). It is toxic to cells and should be disposed of properly. Avoid repeated freeze-thaw cycles.

Clonality

Polyclonal

Ig Type

Rabbit IgG

Applications

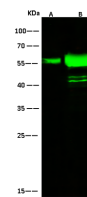
WB, IP

Dilutions

WB: 5-10 µg/ml

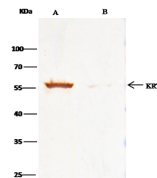
IP: 1-4 µg/mg of lysate

Validations



Items	Lanes	A	B
Sample (whole cell lysate)		HepG2	A431
Sample Volume (µg/lane)		30	30
Gel		13% SDS-PAGE reducing gel	
Recommended Concentration		5-10 µg/ml	
Secondary Antibody		Dylight 800-labeled Antibody to Rabbit IgG (H+L), at 1°/1000 dilution	
Developed using Odyssey imaging system			
Explanation		Predicted band size : 51 kDa Observed band size : 58 kDa Additional bands at : 45 kDa and 42 kDa (We are unsure as to the identity of these extra bands. They are possible non-specific bindings).	

KRT7 / Cytokeratin-7 Antibody, Rabbit PAb, Antigen Affinity Purified, Western blot



Items	Lanes	A	B
Sample (whole cell lysate)		HepG2	
Sample quantity		0.5 mg	
IP antibody type		KL11-SMCC-sinoA311-RP02	Rabbit blank IgG
IP antibody quantity		2 µg	
Protein G agarose		1.5 µl of 50% Protein G Agarose	
Gel		13% SDS-PAGE reducing gel	
Primary antibody		KL11-SMCC-sinoA311-RP02 antibody at 5 µg/ml	
Secondary antibody		Clean-Blot0 IP Detection Reagent (EIP) at 1:1000 dilution	

KRT7 / Cytokeratin-7 Antibody, Rabbit PAb, Antigen Affinity Purified, Immunoprecipitation

Immunochemical staining of human CREB1 in human breast carcinoma with rabbit polyclonal antibody (1 µg/mL, formalin-fixed paraffin embedded sections).