

# Anti-GFAP antibody

Catalog Number: 100151

## Product name

Anti-GFAP antibody

## Specificity

human GFAP

## Antibody description

Rabbit polyclonal to GFAP

## Preparation

Produced in rabbits immunized with A synthetic peptide corresponding to the center region of the human GFAP, and purified by antigen affinity chromatography.

## Formulation

0.2 µm filtered solution in PBS

## Storage

This antibody can be stored at 2°C-8°C for one month without detectable loss of activity. Antibody products are stable for twelve months from date of receipt when stored at -20°C to -80°C.

Preservative-Free.

Sodium azide is recommended to avoid contamination (final concentration 0.05%-0.1%). It is toxic to cells and should be disposed of properly. Avoid repeated freeze-thaw cycles.

## Clonality

Polyclonal

## Ig Type

Rabbit IgG

## Applications

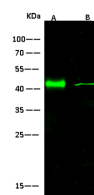
WB, IHC-P

## Dilutions

WB: 10-20 µg/ml

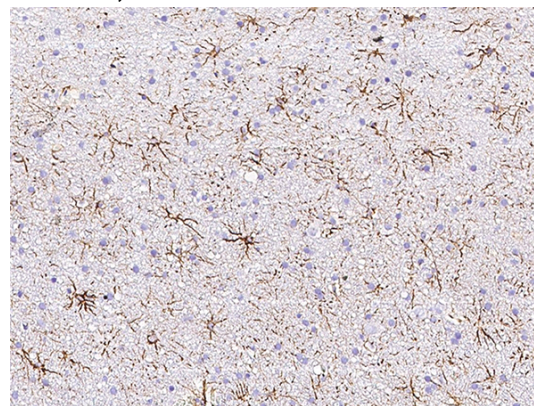
IHC-P: 0.1-1 µg/mL

## Validations



Lanes	A	B
Items		
Sample (Tissue lysate)	Mouse brain	Rat brain
Sample Volume (µg/lane)	30	30
Gel	13% SDS-PAGE reducing gel	
Recommended Concentration	10-20 µg/ml	
Secondary Antibody	Dylight 800-labeled Antibody To Rabbit IgG (H+L), at 1:5000 dilution. Developed using Odyssey imaging system.	
Explanation	Predicted band size : 50 kDa Observed band size : 42 kDa	

## GFAP Antibody, Rabbit PAb, Antigen Affinity Purified, Western blot



## GFAP Antibody, Rabbit PAb, Antigen Affinity Purified, Immunohistochemistry

Immunochemical staining of human GFAP in human brain with rabbit polyclonal antibody (0.2 µg/mL, formalin-fixed paraffin embedded sections).