

Anti-Calreticulin antibody



Catalog Number: 100120

Product name

Anti-Calreticulin antibody

Immunogen

[Human Calreticulin \(His Tag\) recombinant protein](#)

Specificity

Human Calreticulin

Antibody description

Rabbit polyclonal to Calreticulin

Preparation

Produced in rabbits immunized with purified, recombinant Human Calreticulin (rh Calreticulin; P27797; Met1-Ala413). Calreticulin specific IgG was purified by Human Calreticulin affinity chromatography.

Formulation

0.2 μ m filtered solution in PBS

Storage

This antibody can be stored at 2°C-8°C for one month without detectable loss of activity. Antibody products are stable for twelve months from date of receipt when stored at -20°C to -80°C.

Preservative-Free.

Sodium azide is recommended to avoid contamination (final concentration 0.05%-0.1%). It is toxic to cells and should be disposed of properly. Avoid repeated freeze-thaw cycles.

Clonality

Polyclonal

Ig Type

Rabbit IgG

Applications

ELISA, WB, IHC-P, IP

Dilutions

WB: 2-10 μ g/ml

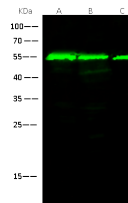
ELISA:0.1-0.2 μ g/mL

This antibody can be used at 0.1-0.2 μ g/mL with the appropriate secondary reagents to detect Human Calreticulin. The detection limit for Human Calreticulin is < 0.039 ng/well.

IHC-P: 0.05-1 μ g/ml

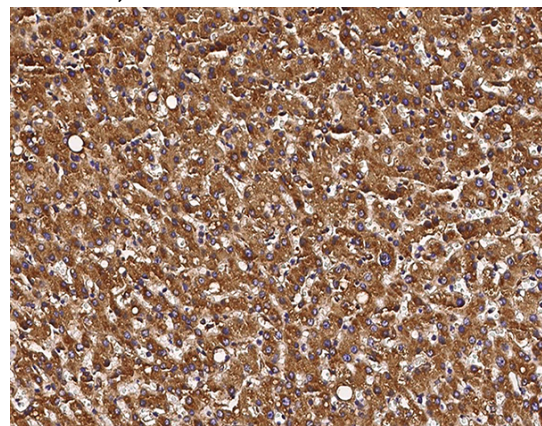
IP: 1-4 μ g/mg of lysate

Validations



Lanes	A	B	C
Sample (whole cell lysate)	NIH/3T3	HELA	PC12
Sample Volume (μ g/lane)	30	30	30
Gel	13%SDS-PAGE reducing gel		
Recommended Concentration	2-10 μ g/ml		
Secondary Antibody	Dylight 800-labeled Antibody To Rabbit IgG (H+), at 1:5000 dilution.		
Developed using Odyssey imaging system.			
Explanation	Predicted band size : 46 kDa Observed band size : 56 kDa		

Calreticulin Antibody, Rabbit PAb, Antigen Affinity Purified, Western blot

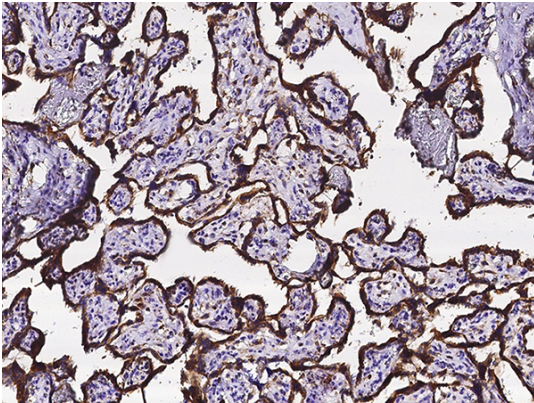


Calreticulin Antibody, Rabbit PAb, Antigen Affinity Purified, Immunohistochemistry

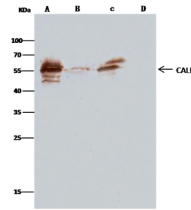
Anti-Calreticulin antibody



Catalog Number: 100120



Calreticulin Antibody, Rabbit PAb, Antigen Affinity Purified, Immunohistochemistry



Lanes	A	B	C	D
Items				
Sample (whole cell lysate)	HeLa		NIH3T3	
Sample quantity	0.5 mg			
IP antibody type	CAIR RPO2	Rabbit blank IgG	CAIR RPO2	Rabbit blank IgG
IP antibody quantity	2 µg			
Protein G agarose	15 µl of 50% Protein G Agarose			
Cid	13% SDS-PAGE-reducing gel			
Primary antibody	CAIR antibody at 10 µg/ml			
Secondary antibody	Chem-Biot0 IP Detection Reagent (HRP) at 1:1000 dilution.			

Calreticulin Antibody, Rabbit PAb, Antigen Affinity Purified, Immunoprecipitation