

Anti-PRPH/Peripherin antibody



Catalog Number: 100096

Product name

Anti-PRPH/Peripherin antibody

Specificity

Human PRPH / Peripherin

Antibody description

Rabbit polyclonal to PRPH/Peripherin

Preparation

Produced in rabbits immunized with a synthetic peptide corresponding to the center region of the Human PRPH / Peripherin, and purified by antigen affinity chromatography.

Formulation

0.2 µm filtered solution in PBS

Storage

This antibody can be stored at 2°C-8°C for one month without detectable loss of activity. Antibody products are stable for twelve months from date of receipt when stored at -20°C to -80°C.

Preservative-Free.

Sodium azide is recommended to avoid contamination (final concentration 0.05%-0.1%). It is toxic to cells and should be disposed of

properly. Avoid repeated freeze-thaw cycles.

Clonality

Polyclonal

Ig Type

Rabbit IgG

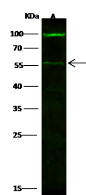
Applications

WB

Dilutions

WB: 10-30 µg/ml

Validations



Lanes	A
Items	
Sample (whole cell lysate)	Hela
Sample Volume (µg/lane)	30
Gel	13% SDS-PAGE reducing gel
Recommended Concentration	10-30 µg/ml
Secondary Antibody	Dylight 800 labeled Antibody to Rabbit IgG (H+L), at 1:5000 dilution.
Explanation	Developed using Odyssey imaging system. Predicted band size : 54 kDa Observed band size : 55 kDa Additional bands at : 100 kDa (We are unsure as to the identity of these extra bands.)

PRPH / Peripherin Antibody, Rabbit PAb, Antigen Affinity Purified, Western blot