

Anti-HIST2H2BE antibody



Catalog Number: 100093

Product name

Anti-HIST2H2BE antibody

Immunogen

[Human HIST2H2BE recombinant protein](#)

Specificity

Human HIST2H2BE

Antibody description

Rabbit polyclonal to HIST2H2BE

Preparation

Produced in rabbits immunized with purified, recombinant Human HIST2H2BE (rh HIST2H2BE; Q16778; Met1-Lys126). HIST2H2BE specific IgG was purified by Human HIST2H2BE affinity chromatography.

Formulation

0.2 µm filtered solution in PBS

Storage

This antibody can be stored at 2°C-8°C for one month without detectable loss of activity. Antibody products are stable for twelve months from date of receipt when stored at -20°C to -80°C.

Preservative-Free.

Sodium azide is recommended to avoid contamination (final concentration 0.05%-0.1%). It is toxic to cells and should be disposed of properly. Avoid repeated freeze-thaw cycles.

Clonality

Polyclonal

Ig Type

Rabbit IgG

Applications

ELISA, WB, IHC-P

Dilutions

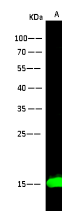
WB: 0.5-1 µg/ml

ELISA:0.1-0.2 µg/mL

This antibody can be used at 0.1-0.2 µg/mL with the appropriate secondary reagents to detect Human HIST2H2BE. The detection limit for Human HIST2H2BE is < 0.039 ng/well.

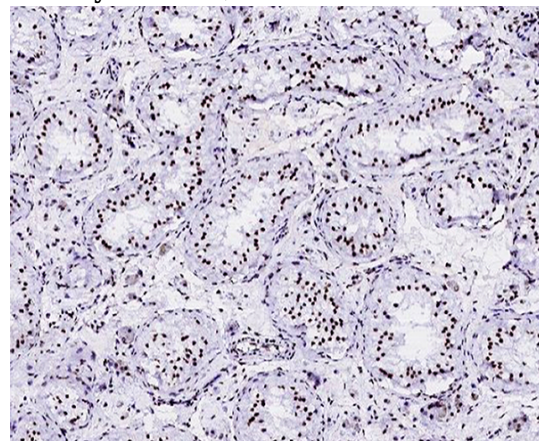
IHC-P: 0.01-0.1 µg/ml

Validations



Lanes	A
Items	
Sample (whole cell lysate)	Jurkat
Sample Volume (µg/lane)	30
Gel	13%SDS-PAGE reducing gel
Recommended concentration	0.5-1µg/ml
Secondary Antibody	Dylight 800-labeled Antibody To Rabbit IgG (H+L), at 1:5000 dilution
Developed using Odyssey imaging system.	
Explanation	Predicted band size : 14 kDa Observed band size : 15 kDa

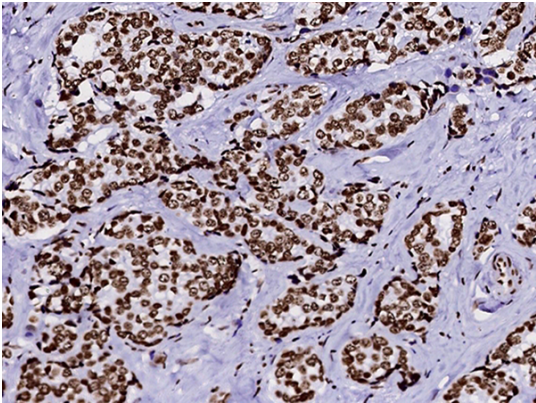
HIST2H2BE Antibody, Rabbit PAb, Antigen Affinity Purified, Western blot



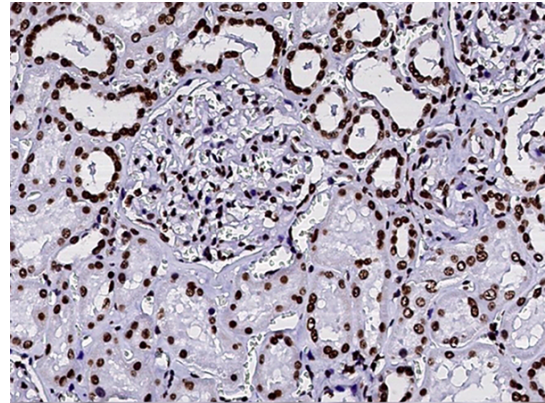
HIST2H2BE Antibody, Rabbit PAb, Antigen Affinity Purified, Immunohistochemistry

Anti-HIST2H2BE antibody

Catalog Number: 100093



HIST2H2BE Antibody, Rabbit PAb, Antigen Affinity Purified, Immunohistochemistry



HIST2H2BE Antibody, Rabbit PAb, Antigen Affinity Purified, Immunohistochemistry