

Anti-Carboxypeptidase B1/CPB1 antibody



Catalog Number: 100075

Product name

Anti-Carboxypeptidase B1/CPB1 antibody

Immunogen

[Human Carboxypeptidase B1/CPB1 \(His Tag\) recombinant protein](#)

Specificity

Human Carboxypeptidase B1 / CPB1
No cross-reactivity in ELISA with Human CPB1; Mouse CPB1; Human CPA1; Human CPA2; Human CPE

Antibody description

Mouse monoclonal to Carboxypeptidase B1/CPB1

Preparation

This antibody was produced from a hybridoma resulting from the fusion of a mouse myeloma with B cells obtained from a mouse immunized with purified, recombinant Human Carboxypeptidase B1 / CPB1 (rh Carboxypeptidase B1 / CPB1; NP_001862.2; Met1-Tyr417). The IgG fraction of the cell culture supernatant was purified by Protein A affinity chromatography.

Formulation

0.2 µm filtered solution in PBS

Storage

This antibody can be stored at 2°C-8°C for one month without detectable loss of activity. Antibody products are stable for twelve months from date of receipt when stored at -20°C to -80°C.

Preservative-Free.

Sodium azide is recommended to avoid contamination (final concentration 0.05%-0.1%). It is toxic to cells and should be disposed of properly. Avoid repeated freeze-thaw cycles.

Clonality

Monoclonal

Ig Type

Mouse IgG1

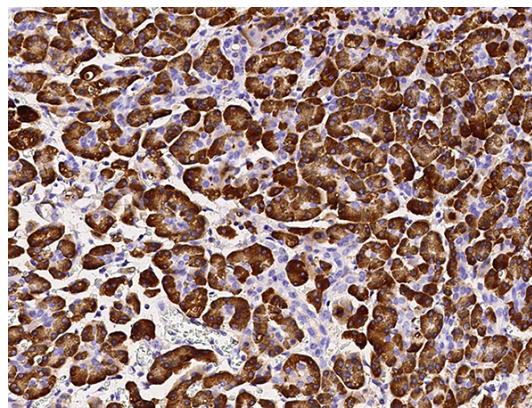
Applications

IHC-P

Dilutions

IHC-P: 0.2-5 µg/mL

Validations



Carboxypeptidase B1 / CPB1 Antibody, Mouse MAb, Immunohistochemistry

Immunochemical staining of human CPB1 in human pancreas with mouse monoclonal antibody (0.5 µg/mL, formalin-fixed paraffin embedded sections).