

Anti-Green fluorescent protein / GFP antibody



Catalog Number: 100072

Product name

Anti-Green fluorescent protein / GFP antibody

Immunogen

[Aequorea victoria Green fluorescent protein / GFP \(His Tag\)](#)

Specificity

Aequorea victoria GFP

Antibody description

Rabbit monoclonal to Green fluorescent protein / GFP

Preparation

This antibody was obtained from a rabbit immunized with purified, recombinant Aequorea victoria GFP (AAB65663; Ser2-Lys238).

Formulation

0.2 μ m filtered solution in PBS with 5% trehalose

Storage

This antibody can be stored at 2°C-8°C for one month without detectable loss of activity. Antibody products are stable for twelve months from date of receipt when stored at -20°C to -80°C.

Preservative-Free.

Sodium azide is recommended to avoid contamination (final concentration 0.05%-0.1%). It is toxic to cells and should be disposed of properly. Avoid repeated freeze-thaw cycles.

Clonality

Monoclonal

Ig Type

Rabbit IgG

Applications

ELISA, WB, IP

Dilutions

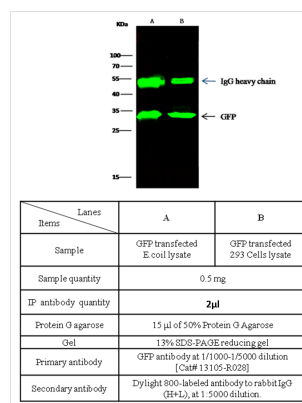
WB: 1/1000-1/5000

ELISA: 1/10000-1/20000

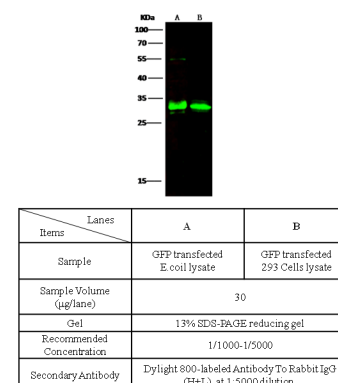
This antibody can be used at 1/10000-1/20000 dilution with the appropriate secondary reagents to detect Aequorea victoria GFP. The detection limit for Aequorea victoria GFP is approximately 0.0049 ng/well.

IP: 1-4 μ l/mg of lysate

Validations



GFP Antibody, Rabbit MAb, Immunoprecipitation



GFP Antibody, Rabbit MAb, Western blot