

# Anti-LILRB2 / ILT4 / LIR-2 antibody



Catalog Number: 100045

## Product name

Anti-LILRB2 / ILT4 / LIR-2 antibody

## Immunogen

[Human LILRB2 / ILT4 / LIR-2 \(His Tag\) recombinant protein](#)

## Specificity

Human LILRB2 / ILT4 / LIR-2

## Antibody description

Mouse monoclonal to LILRB2 / ILT4 / LIR-2

## Preparation

This antibody was produced from a hybridoma resulting from the fusion of a mouse myeloma with B cells obtained from a mouse immunized with purified, recombinant Human LILRB2 / ILT4 / LIR-2 (rh LILRB2 / ILT4 / LIR-2; AAH36827.1; Met1-Val461) and conjugated with FITC under optimum conditions, the unreacted FITC was removed.

## Formulation

Aqueous solution containing 0.5% BSA and 0.09% sodium azide

## Storage

This antibody is stable for 12 months from date of receipt when stored at 2°C-8°C. Protected from prolonged exposure to light. Do not freeze ! Sodium azide is toxic to cells and should be disposed of properly. Flush with large volumes of

water during disposal.

## Clonality

Monoclonal

## Ig Type

Mouse IgG2b

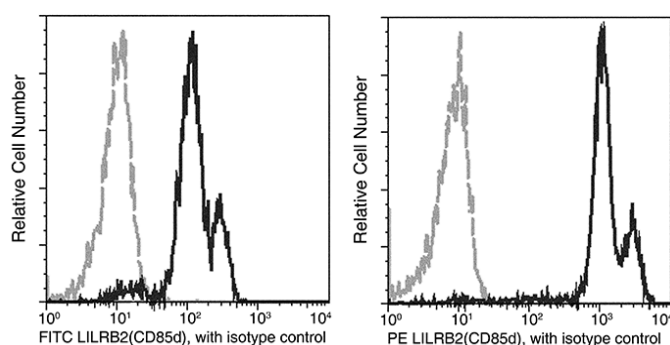
## Applications

FCM

## Dilutions

FCM

## Validations



LILRB2 / ILT4 / LIR-2 Antibody, Mouse MAb, Flow Cytometry

Flow cytometric analysis of Human LILRB2(CD85d) expression on human whole blood monocytes. Cells were stained with FITC-conjugated anti-Human LILRB2(CD85d). The fluorescence histograms were derived from gated events with the forward and side light-scatter characteristics of viable monocytes.