

Anti-CDC37 antibody



Catalog Number: 100039

Product name

Anti-CDC37 antibody

Immunogen

[Mouse CDC37 \(His & GST Tag\) recombinant protein](#)

Specificity

Mouse CDC37

Antibody description

Rabbit polyclonal to CDC37

Preparation

Produced in rabbits immunized with purified, recombinant Mouse CDC37 (rh CDC37; Q61081; Met1-Ala379). CDC37 specific IgG was purified by Mouse CDC37 affinity chromatography.

Formulation

0.2 µm filtered solution in PBS

Storage

This antibody can be stored at 2°C-8°C for one month without detectable loss of activity. Antibody products are stable for twelve months from date of receipt when stored at -20°C to -80°C.

Preservative-Free.

Sodium azide is recommended to avoid contamination (final concentration 0.05%-0.1%). It is toxic to cells and should be disposed of properly. Avoid repeated freeze-thaw cycles.

Clonality

Polyclonal

Ig Type

Rabbit IgG

Applications

ELISA, WB, IHC-P, IP

Dilutions

WB: 5-10 µg/ml

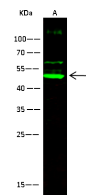
ELISA: 0.1-0.2 µg/mL

This antibody can be used at 0.1-0.2 µg/mL with the appropriate secondary reagents to detect Mouse CDC37. The detection limit for Mouse CDC37 is < 0.039 ng/well.

IHC-P: 0.05-0.5 µg/ml

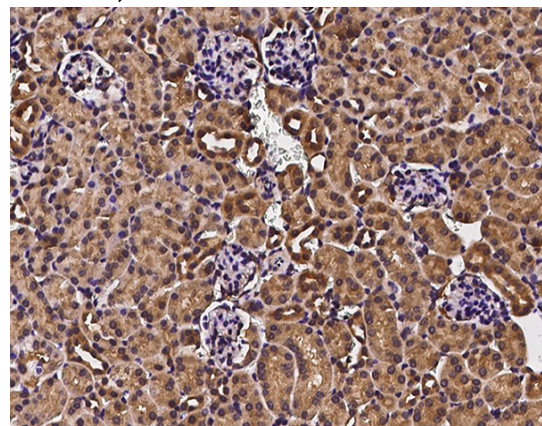
IP: 1-4 µg/mg of lysate

Validations



| Lanes | A |
|---|--|
| Sample (whole cell lysate) | HepG2 |
| Sample Volume (µg/lane) | 30 |
| Gel | 13% SDS-PAGE reducing gel |
| Recommended Concentration | 5-10 µg/ml |
| Secondary Antibody | Dylight 800 labeled Antibody To Rabbit IgG (1:14), at 1:5000 dilution. |
| Developed using Odyssey imaging system. | |
| Explanation | Predicted band size : 42kDa Observed band size : 48kDa Additional bands at : 65kDa and 130kDa (We are unsure as to the identity of these extra bands. They are possible non-specific bindings). |

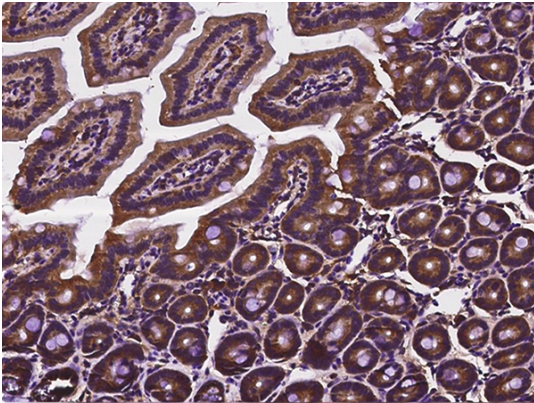
CDC37 Antibody, Rabbit PAb, Antigen Affinity Purified, Western blot



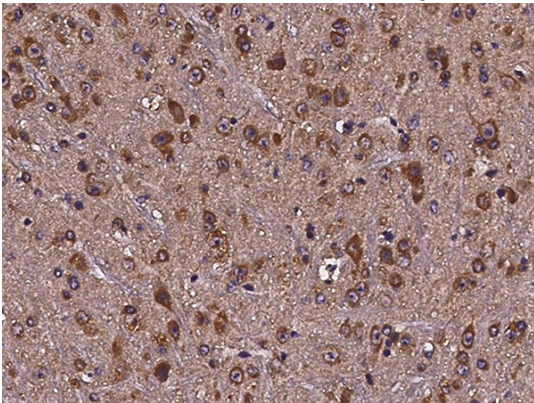
CDC37 Antibody, Rabbit PAb, Antigen Affinity Purified, Immunohistochemistry

Anti-CDC37 antibody

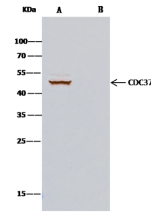
Catalog Number: 100039



CDC37 Antibody, Rabbit PAb, Antigen Affinity Purified, Immunohistochemistry



CDC37 Antibody, Rabbit PAb, Antigen Affinity Purified, Immunohistochemistry



| Items | Lanes | |
|----------------------------|---|------------------|
| | A | B |
| Sample (whole cell lysate) | HepG2 | |
| Sample quantity | 0.5 mg | |
| IP antibody type | mCDC37-HP02 | Rabbit empty IgG |
| IP antibody quantity | 2 µg | |
| Protein G agarose | 1.5 µl of 50% Protein G Agarose | |
| Gel | 15% SDS-PAGE reducing gel | |
| Primary antibody | mCDC37 antibody at 10 µg/ml | |
| Secondary antibody | Clean-Block IP Detection Reagent (HRP) at 1:1000 dilution | |

CDC37 Antibody, Rabbit PAb, Antigen Affinity Purified, Immunoprecipitation