

Product name

Anti-PDRG1 / C20orf126 antibody

Immunogen

[Human PDRG1 / C20orf126 \(His Tag\) recombinant protein](#)

Specificity

Human PDRG1 / C20orf126

Antibody description

Rabbit polyclonal to PDRG1 / C20orf126

Preparation

Produced in rabbits immunized with purified, recombinant Human PDRG1 / C20orf126 (rh PDRG1 / C20orf126; Q9NUG6; Met1-Gly133). PDRG1 / C20orf126 specific IgG was purified by Human PDRG1 / C20orf126 affinity chromatography.

Formulation

0.2 µm filtered solution in PBS

Storage

This antibody can be stored at 2°C-8°C for one month without detectable loss of activity. Antibody products are stable for twelve months from date of receipt when stored at -20°C to -80°C.

Preservative-Free.

Sodium azide is recommended to avoid contamination (final concentration 0.05%-0.1%). It is toxic to cells and should be disposed of properly. Avoid repeated freeze-thaw cycles.

Clonality

Polyclonal

Ig Type

Rabbit IgG

Applications

ELISA, IHC-P

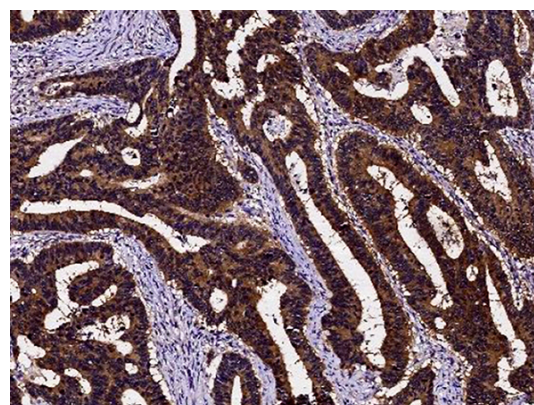
Dilutions

ELISA:0.1-0.2 µg/mL

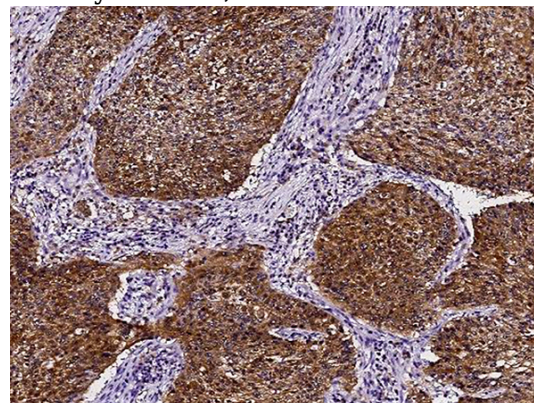
This antibody can be used at 0.1-0.2 µg/mL with the appropriate secondary reagents to detect Human PDRG1 / C20orf126. The detection limit for Human PDRG1 / C20orf126 is < 0.039 ng/well.

IHC-P: 0.05-0.5 µg/ml

Validations



PDRG1 / C20orf126 Antibody, Rabbit PAb, Antigen Affinity Purified, Immunohistochemistry

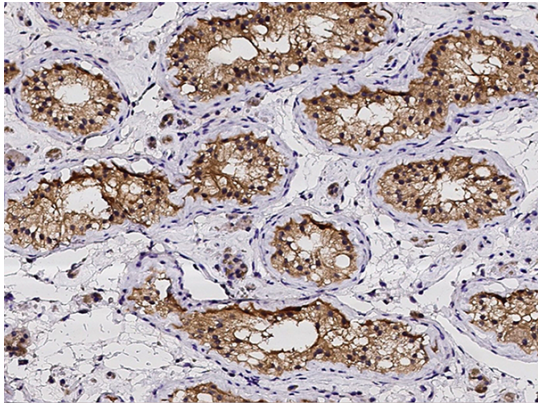


PDRG1 / C20orf126 Antibody, Rabbit PAb, Antigen Affinity Purified, Immunohistochemistry

Anti-PDRG1 / C20orf126 antibody



Catalog Number: 100032



PDRG1 / C20orf126 Antibody, Rabbit PAb, Antigen Affinity Purified, Immunohistochemistry