

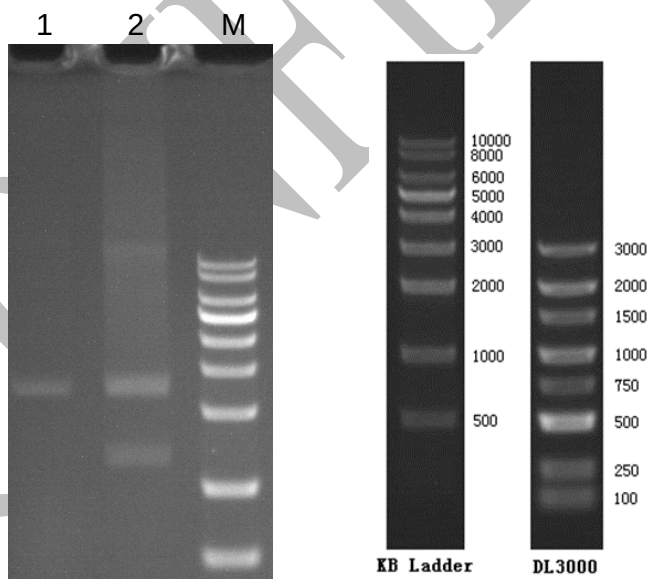
## CERTIFICATE OF ANALYSIS

<b>Gene Name</b>	pMG36e vector	<b>Catalog No.</b>	V012803
<b>Lot No.</b>	PN08044	<b>Size</b>	3,610 bp
<b>Competence</b>	MC1061	<b>Vector Resistance</b>	Erythromycin

### QC Results

Test Items	Specifications	Results
<b>Insert Sequence</b>	Insert sequence results consistent with target	Pass
<b>Vector Sequence</b>	Flanking sequence consistent with expected	Pass
<b>ORF Across Junction</b>	Correct and consistent with target	N/A
<b>Restriction Digest</b>	Expected fragment sizes observed	Pass
<b>PCR Amplification</b>	Correct without non - specific bands	Pass
<b>DNA Quantity/Quality</b>	Actual yield (by A 260 )	5ug/5ug
	Concentration (n/a if lyophilized)	N/A
	Purity (A 260/A280 = 1.8 - 2.0)	Pass
	# of Tubes	1
	Matrix	TE (lyophilized)
<b>Endotoxin Test</b>	Verified, <0.1 EU/μg (Endo-Free Preps Only)	N/A
<b>Appearance</b>	Clear, no visible particles	Pass
<b>Label</b>	Correct and white	Pass
<b>Comments</b>	-	-

### Enzyme Digestion



Lane M: KB Ladder  
 Lane 1: pMG36e plasmids  
 Lane 2: pMG36e plasmids digested by EcoRI and NheI

**Certified by: Chou Fang**

**Date: May-08-2023**



# Vector Map

