

CERTIFICATE OF ANALYSIS

Product Name	REF1 (soybean) peptide, Cat.#: 319606 (TFA removed)
Lot No.	MTFA32847-250521
Sequence	RRGSVLQTKRRHDGGKGRDPQTN (Acetate Salt)
Dissolution condition	100%H ₂ O
Length	23AA
Modification	acetate salt
Molecular Weight (MW)	2619.87
Storage	-20°C

Test Items	Specifications	Results
MW by MS	2620.00	Conforms
Purity by HPLC	>95%	95.179%
Peptide content	N/A	N/A
Moisture content	N/A	N/A
Acetic acid content	N/A	N/A
Appearance	White to off-white lyophilized powder	Conforms
Quantity	40mg	5.0mg*8

NovoPro Bioscience Inc. (hereafter NovoPro) warrants material of said quality at the time of sale. It is the sole responsibility of the customers to determine the adequacy of all materials for any intended or specific purpose or use. NovoPro's sole obligation is to replace the material up to the extent of the purchase price. This warranty applies only to products in original packaging and does not apply to a product which has been tampered with or altered in any way in or which has been misused or damaged by accident or negligence. All claims must be received writing (by fax or email) within 30 days from date when product arrive at the destination city and failure to do so shall constitute a waiver by customers for any and all such claims.

Certified by:



Jun/09/2025

Quality Assurance Department



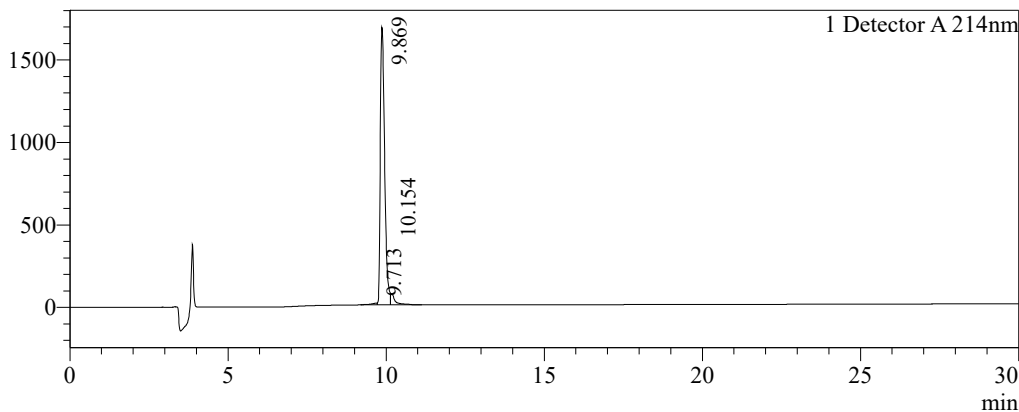
Sample Information

Order ID :MTFA32847
 Name :REF1 (soybean) peptide
 Sequence :RRGSVLQTKRRHDGGKGRDPQTN (Acetate Salt)
 Lot. No :MTFA32847-250521
 Pump A :0.1%Trifluoroacetic in 100% water
 Pump B :0.1%Trifluoroacetic in 100% acetonitrile
 Total Flow :1ml/min
 Wavelength :214nm
 Analytical column type :Kromasil 100-5-C18 (4.6*250mm*5 µm)
 Dissolution method :100%H₂O
 Inj. Volume : 25ul

Time	Module	Action	Value
0.01	Pumps	B.Conc	10
30.00	Pumps	B.Conc	40
33.00	Pumps	B.Conc	100
38.00	Pumps	B.Conc	100
40.00	Pumps	B.Conc	10
50.00	Controller	Stop	

Chromatogram

mV

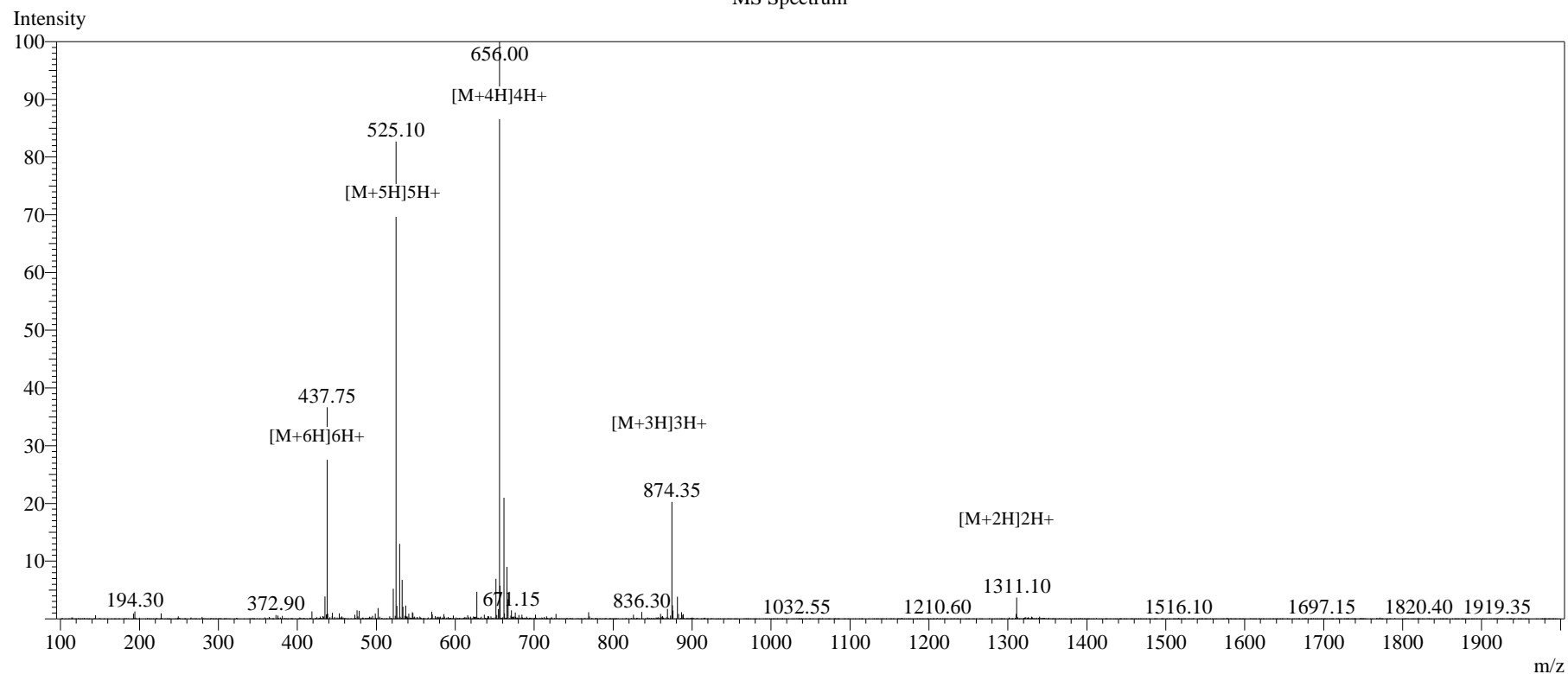


Peak Table

Detector A 214nm

Peak#	Ret. Time	Area	Height	Area%
1	9.713	147434	10542	0.870
2	9.869	16126281	1682973	95.179
3	10.154	669395	68277	3.951
Total		16943111	1761792	100.000

MS Spectrum



Sample Information

Dissolution method	:15% ACN+85% H ₂ O	Interface	:ESI	Prerod Bias	:+4.5kv
Date Acquired	:2025/06/06 14:33:58	Nebulizing Gas Flow	:1.50L/min	Detector	:-0.2kv
Injection Volume	:0.2ul	CDL Temp	:250°C	T.Flow	:0.2ml/min
Block Temp	:200	CDL Volt	:0v	B.conc	:50% H ₂ O/50% ME OH

Order ID	:MTFA32847
Name	:REF1 (soybean) peptide
Sequence	:RRGSVLQTKRRH DGGKGRDPQTN (Acetate Salt)
Lot.No	:MTFA32847-250521
Theoretical	:2619.87
Observed	:2620.00