

## CERTIFICATE OF ANALYSIS

Product Name	PepW peptide, Cat.#: 318907 (TFA removed)
Lot No.	MTFA33292-250905
Sequence	WWWA-{Dab}-YGL-{Dab}-LL-{Dab}-Y-{Dab}--{Dab}-WY (Acetate Salt)
Dissolution condition	5%HCOOH+15%ACN+80%H2O
Modification	acetate salt
Molecular Weight (MW)	2220.85
Storage	-20°C

Test Items	Specifications	Results
MW by MS	2220.50	Conforms
Purity by HPLC	>95%	98.793%
Peptide Content	N/A	N/A
TFA solubility	N/A	N/A
Moisture content	N/A	N/A
Acetic acid content	N/A	N/A
Appearance	White to off-white lyophilized powder	Conforms
Quantity	10 mg	5.0mg*2

NovoPro Bioscience Inc. (hereafter NovoPro) warrants material of said quality at the time of sale. It is the sole responsibility of the customers to determine the adequacy of all materials for any intended or specific purpose or use. NovoPro's sole obligation is to replace the material up to the extent of the purchase price. This warranty applies only to products in original packaging and does not apply to a product which has been tampered with or altered in any way in or which has been misused or damaged by accident or negligence. All claims must be received writing (by fax or email) within 30 days from date when product arrive at the destination city and failure to do so shall constitute a waiver by customers for any and all such claims.

Certified by:



Sep/26/2025

Quality Assurance Department



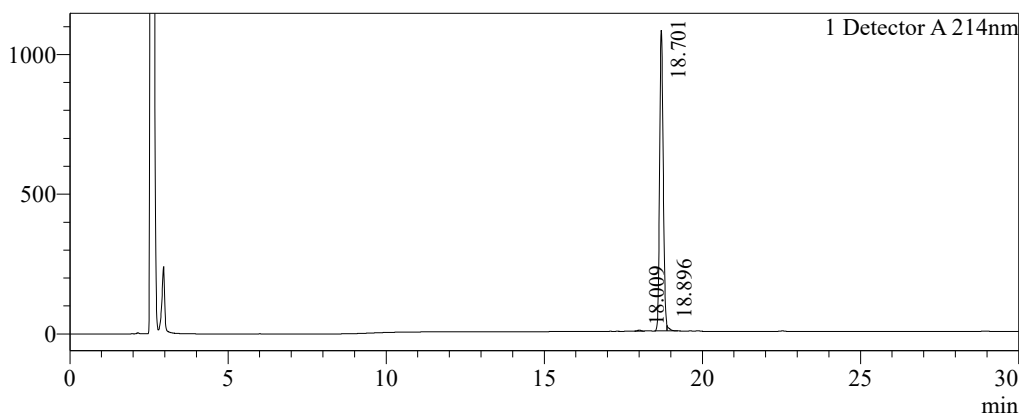
### Sample Information

Order ID :MTFA33292  
 Name :PepW peptide  
 Sequence :WWWA-{Dab}-YGL-{Dab}-LL-{Dab}-Y-{Dab}--{Dab}-WY  
 (Acetate Salt)  
 Lot. No :MTFA33292-250905  
 Pump A :0.1%Trifluoroacetic in 100% water  
 Pump B :0.1%Trifluoroacetic in 100% acetonitrile  
 Total Flow :1ml/min  
 Wavelength :214nm  
 Analytical column type :Kromasil 100-5-C18 (4.6\*250mm\*5 µm)  
 Dissolution method :5%HCOOH+15%ACN+80%H2O  
 Inj. Volume : 8ul  

Time	Module	Action	Value
0.01	Pumps	B.Conc	25
30.00	Pumps	B.Conc	55
33.00	Pumps	B.Conc	100
38.00	Pumps	B.Conc	100
40.00	Pumps	B.Conc	25
50.00	Controller	Stop	

### Chromatogram

mV

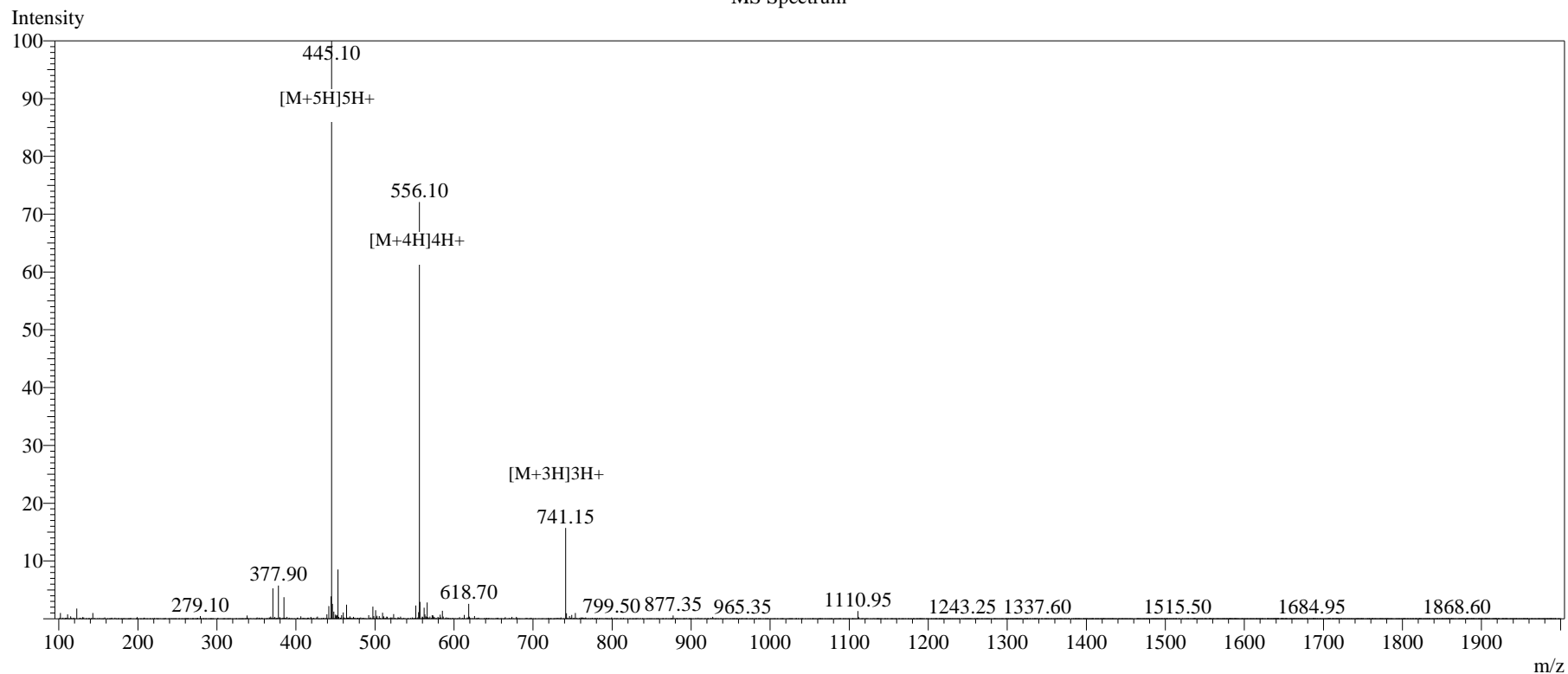


### Peak Table

Detector A 214nm

Peak#	Ret. Time	Area	Height	Area%
1	18.009	23667	3494	0.274
2	18.701	8538122	1076064	98.793
3	18.896	80665	16688	0.933
Total		8642455	1096245	100.000

# MS Spectrum



## Sample Information

Dissolution method	:5% HCOOH+15% ACN+80% H <sub>2</sub> O	Interface	:ESI	Prerod Bias	:+4.5kv
Date Acquired	:2025/09/25 10:35:38	Nebulizing Gas Flow	:1.50L/min	Detector	:-0.2kv
Injection Volume	:0.2ul	CDL Temp	:250°C	T.Flow	:0.2ml/min
Block Temp	:200	CDL Volt	:0v	B.conc	:50% H <sub>2</sub> O/50% ME OH
Order ID	:MTFA33292				
Name	:PepW peptide				
Sequence	:WWWA-{Dab}-YGL-{Dab}-LL-{Dab}-Y-{Dab}--{Dab}-WY (Acetate Salt)				
Lot.No	:MTFA33292-250905				
Theoretical	:2220.85				
Observed	:2220.50				