

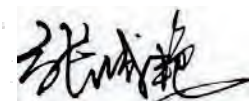
CERTIFICATE OF ANALYSIS

Product Name	PA2-GNU7 peptide (Cat.#: 318763)
Lot No.	MTFA30925-0118
Sequence	SQRKLAAKLTSKGGGRLLRPLLQLLKQKLR
Dissolution condition	100%H2O
Length	30AA
Modification	N/A
Molecular Weight (MW)	3372.08
Storage	-20°C

Test Items	Specifications	Results
MW by MS	3372.50	Conforms
Purity by HPLC	>95%	95.297%
Peptide content	N/A	N/A
Moisture content	N/A	N/A
Acetic acid content	N/A	N/A
Appearance	White to off-white lyophilized powder	Conforms
Quantity	10mg	5.0mg*2

NovoPro Bioscience Inc. (hereafter NovoPro) warrants material of said quality at the time of sale. It is the sole responsibility of the customers to determine the adequacy of all materials for any intended or specific purpose or use. NovoPro's sole obligation is to replace the material up to the extent of the purchase price. This warranty applies only to products in original packaging and does not apply to a product which has been tampered with or altered in any way in or which has been misused or damaged by accident or negligence. All claims must be received writing (by fax or email) within 30 days from date when product arrive at the destination city and failure to do so shall constitute a waiver by customers for any and all such claims.

Certified by:



Feb/05/2024



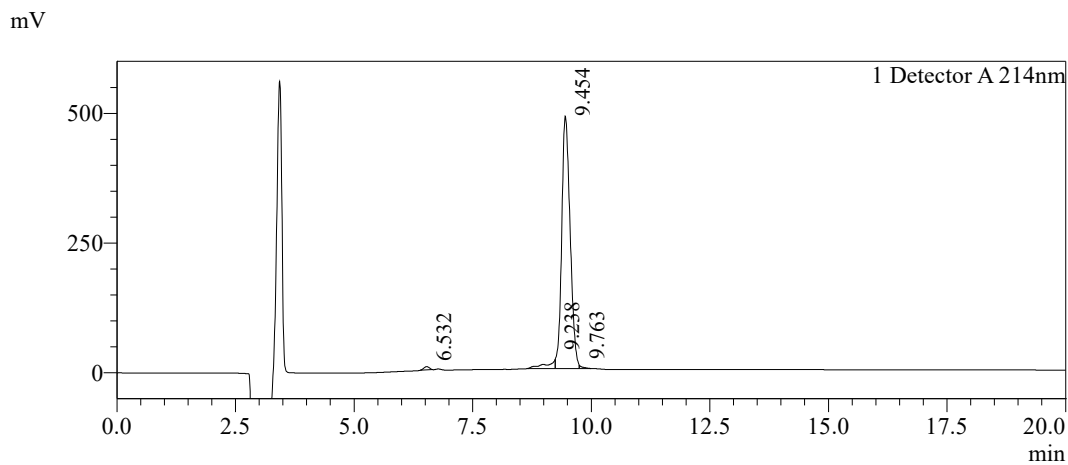
Quality Assurance Department

Sample Information

Order ID :MTFA30925
 Name :PA2-GNU7 peptide
 Sequence :SQRKLAAKLTSGGGRLLRPLLQLLKQKLR
 Lot. No :MTFA30925-0118
 Pump A :0.1%Trifluoroacetic in 100% water
 Pump B :0.1%Trifluoroacetic in 100% acetonitrile
 Total Flow :1ml/min
 Wavelength :214nm
 Analytical column type :Phenomenex Luna® 5 µm C18(2) (4.6*250mm*5 µm)
 Dissolution method :100%H2O
 Inj. Volume : 30ul

Time	Module	Action	Value
0.01	Pumps	B.Conc	30
20.00	Pumps	B.Conc	50
33.00	Pumps	B.Conc	100
38.00	Pumps	B.Conc	100
40.00	Pumps	B.Conc	30
50.00	Controller	Stop	

Chromatogram

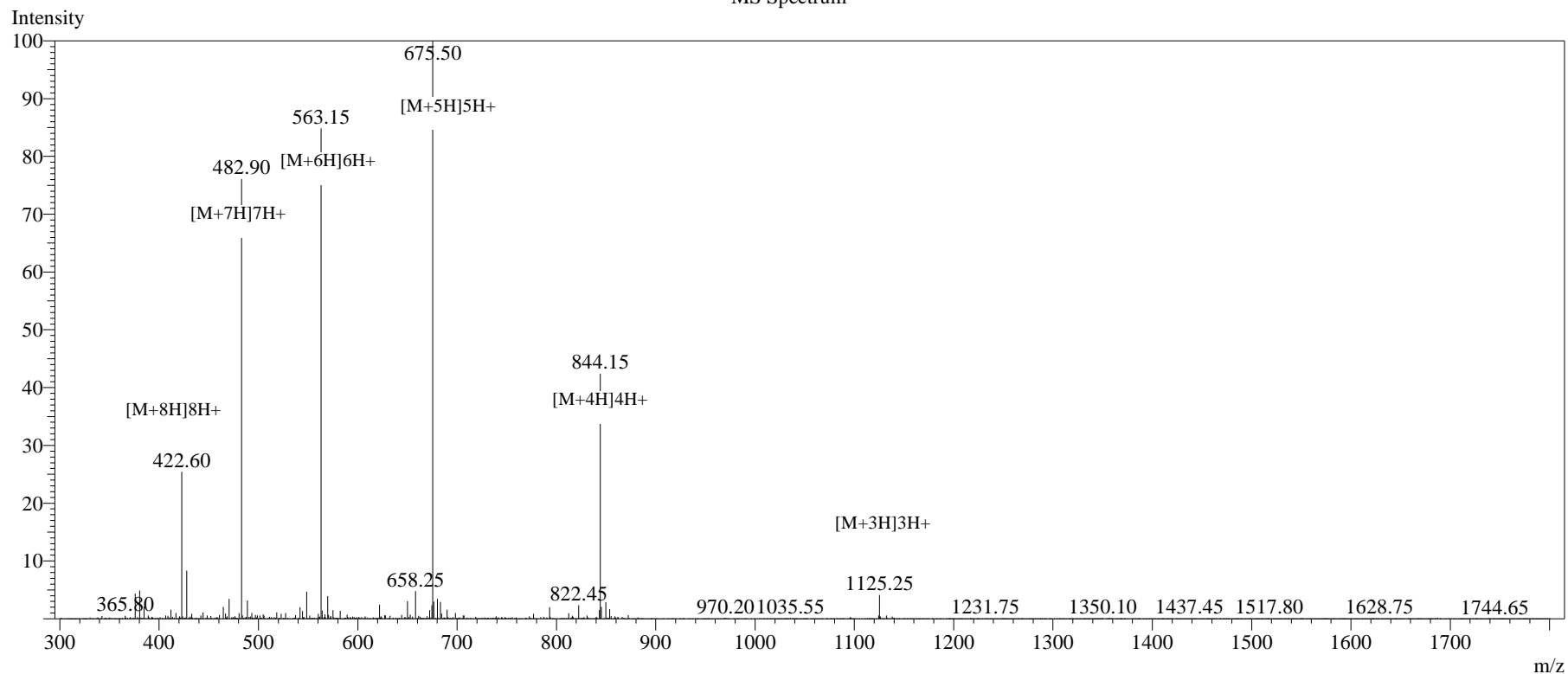


Peak Table

Detector A 214nm

Peak#	Ret. Time	Area	Height	Area%
1	6.532	50308	6340	0.801
2	9.238	220340	16175	3.507
3	9.454	5987360	486077	95.297
4	9.763	24847	5571	0.395
Total		6282856	514163	100.000

MS Spectrum



Sample Information

Dissolution method	:15% ACN+85% H ₂ O	Interface	:ESI	Prerod Bias	:+4.5kv
Date Acquired	:2024/02/04 16:40:48	Nebulizing Gas Flow	:1.50L/min	Detector	:-0.2kv
Injection Volume	:0.2ul	CDL Temp	:250°C	T.Flow	:0.2ml/min
Block Temp	:200	CDL Volt	:0v	B.conc	:50% H ₂ O/50% MEOH

Order ID	:MTFA30925
Name	:PA2-GNU7 peptide
Sequence	:SQRKLAAKLTSGGGRRLLRPLLQLLKQKLR
Lot.No	:MTFA30925-0118
Theoretical	:3372.08
Observed	:3372.50