

## CERTIFICATE OF ANALYSIS

<b>Product Name</b>	Cathelin-related antimicrobial peptide (CRAMP) , Cat.#: 306923
<b>Lot No.</b>	MTFA31107-0313
<b>Sequence</b>	ISRLAGLLRKGGEKIGEKLKKIGQKIKNFFQKLVPQPE
<b>Dissolution condition</b>	100%H2O
<b>Length</b>	38AA
<b>Modification</b>	N/A
<b>Molecular Weight (MW)</b>	4291.18
<b>Storage</b>	-20°C

<b>Test Items</b>	<b>Specifications</b>	<b>Results</b>
<b>MW by MS</b>	4291.80	Conforms
<b>Purity by HPLC</b>	>95%	97.624%
<b>Peptide content</b>	N/A	N/A
<b>Moisture content</b>	N/A	N/A
<b>Acetic acid content</b>	N/A	N/A
<b>Appearance</b>	White to off-white lyophilized powder	Conforms
<b>Quantity</b>	10mg	5.0mg*2

NovoPro Bioscience Inc. (hereafter NovoPro) warrants material of said quality at the time of sale. It is the sole responsibility of the customers to determine the adequacy of all materials for any intended or specific purpose or use. NovoPro's sole obligation is to replace the material up to the extent of the purchase price. This warranty applies only to products in original packaging and does not apply to a product which has been tampered with or altered in any way in or which has been misused or damaged by accident or negligence. All claims must be received writing (by fax or email) within 30 days from date when product arrive at the destination city and failure to do so shall constitute a waiver by customers for any and all such claims.

Certified by:



Apr/02/2024

Quality Assurance Department

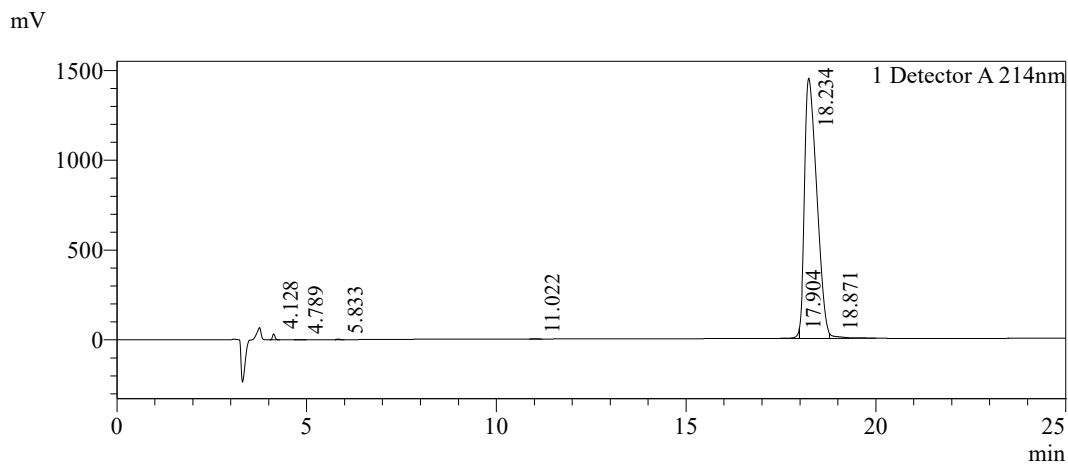


### Sample Information

Order ID :MTFA31107  
 Name :CRAMP  
 Sequence :ISRLAGLLRKGGEKIGEKLLKKIGQKIKNFFQKLVPQPE  
 Lot. No :MTFA31107-0313  
 Pump A :0.1%Trifluoroacetic in 100% water  
 Pump B :0.1%Trifluoroacetic in 100% acetonitrile  
 Total Flow :1ml/min  
 Wavelength :214nm  
 Analytical column type :Phenomenex Luna® 5 µm C18(2) (4.6\*250mm\*5 µm)  
 Dissolution method :100%H2O  
 Inj. Volume : 50ul

Time	Module	Action	Value
0.01	Pumps	B.Conc	25
25.00	Pumps	B.Conc	50
33.00	Pumps	B.Conc	100
38.00	Pumps	B.Conc	100
40.00	Pumps	B.Conc	25
50.00	Controller	Stop	

### Chromatogram

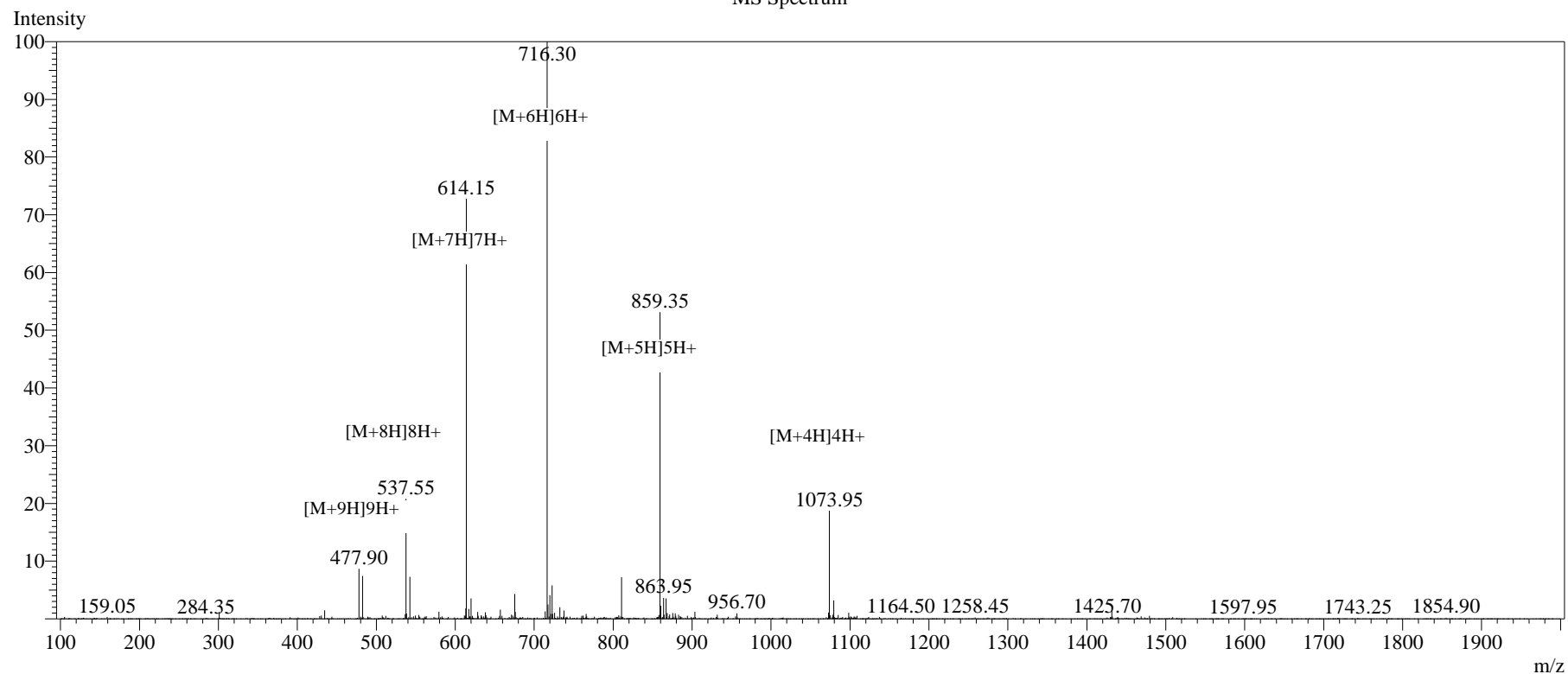


### Peak Table

Detector A 214nm

Peak#	Ret. Time	Area	Height	Area%
1	4.128	155324	32053	0.469
2	4.789	5588	883	0.017
3	5.833	18937	3100	0.057
4	11.022	10993	1273	0.033
5	17.904	240062	11968	0.725
6	18.234	32308687	1448259	97.624
7	18.871	355538	13307	1.074
Total		33095129	1510843	100.000

## MS Spectrum



## Sample Information

Dissolution method	:15% ACN+85% H <sub>2</sub> O	Interface	:ESI	Prerod Bias	:+4.5kv
Date Acquired	:2024/04/01 10:14:00	Nebulizing Gas Flow	:1.50L/min	Detector	:-0.2kv
Injection Volume	:0.2ul	CDL Temp	:250°C	T.Flow	:0.2ml/min
Block Temp	:200	CDL Volt	:0v	B.conc	:50% H <sub>2</sub> O/50% MEOH

Order ID	:MTFA31107
Name	:CRAMP
Sequence	:ISRLAGLLRKGGEKIGEKLLKIGQKIKNFFQKLVPQPE
Lot.No	:MTFA31107-0313
Theoretical	:4291.18
Observed	:4291.80