

## CERTIFICATE OF ANALYSIS

Product Name	CLE45 peptide, Cat.#: 319405 (TFA Removed)
Lot No.	MTFA33619-251120
Sequence	RRVRRGSDPIHN (Acetate Salt)
Dissolution condition	100%H <sub>2</sub> O
Modification	acetate salt
Molecular Weight (MW)	1462.62
Storage	-20°C

Test Items	Specifications	Results
MW by MS	1462.95	Conforms
Purity by HPLC	>95%	95.101%
Endotoxin Content	N/A	N/A
TFA solubility	N/A	N/A
Moisture content	N/A	N/A
Acetic acid content	N/A	N/A
Appearance	White to off-white lyophilized powder	Conforms
Quantity	40mg	5.0mg*8

NovoPro Bioscience Inc. (hereafter NovoPro) warrants material of said quality at the time of sale. It is the sole responsibility of the customers to determine the adequacy of all materials for any intended or specific purpose or use. NovoPro's sole obligation is to replace the material up to the extent of the purchase price. This warranty applies only to products in original packaging and does not apply to a product which has been tampered with or altered in any way in or which has been misused or damaged by accident or negligence. All claims must be received writing (by fax or email) within 30 days from date when product arrive at the destination city and failure to do so shall constitute a waiver by customers for any and all such claims.

Certified by:



Nov/27/2025

Quality Assurance Department

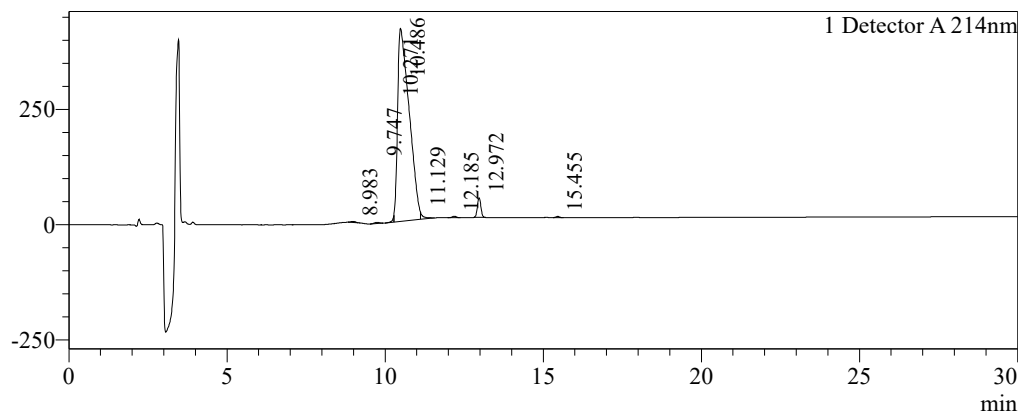


### Sample Information

Order ID	:MTFA33619		
Name	:CLE45 peptide		
Sequence	:RRVRRGSDPIHN (Acetate Salt)		
Lot. No	:MTFA33619-251120		
Pump A	:0.1%Trifluoroacetic in 100% water		
Pump B	:0.1%Trifluoroacetic in 100% acetonitrile		
Total Flow	:1ml/min		
Wavelength	:214nm		
Analytical column type	:Kromasil 100-5-C18 (4.6*250mm*5 µm)		
Dissolution method	:100%H2O		
Inj. Volume	: 30ul		
Time	Module	Action	Value
0.01	Pumps	B.Conc	10
30.00	Pumps	B.Conc	40
33.00	Pumps	B.Conc	100
38.00	Pumps	B.Conc	100
40.00	Pumps	B.Conc	10
50.00	Controller	Stop	

### Chromatogram

mV

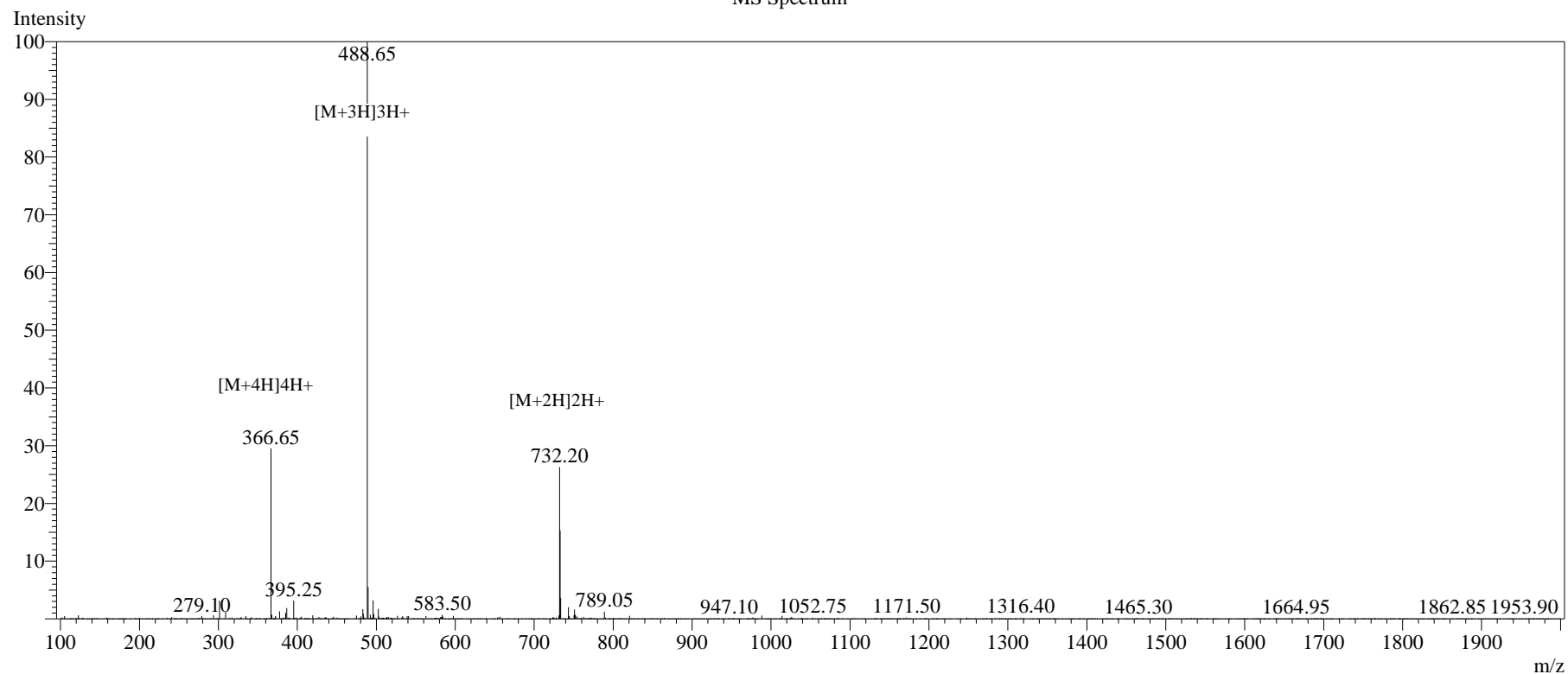


### Peak Table

Detector A 214nm

Peak#	Ret. Time	Area	Height	Area%
1	8.983	20283	2246	0.182
2	9.747	29815	2624	0.268
3	10.271	40802	11717	0.367
4	10.486	10579300	418626	95.101
5	11.129	82324	14100	0.740
6	12.185	27992	3201	0.252
7	12.972	327438	42765	2.943
8	15.455	16276	2360	0.146
Total		11124230	497640	100.000

# MS Spectrum



## Sample Information

Dissolution method	:15% ACN+85% H <sub>2</sub> O	Interface	:ESI	Prerod Bias	:+4.5kv
Date Acquired	:2025/11/26 10:14:10	Nebulizing Gas Flow	:1.50L/min	Detector	:-0.2kv
Injection Volume	:0.2ul	CDL Temp	:250°C	T.Flow	:0.2ml/min
Block Temp	:200	CDL Volt	:0v	B.conc	:50% H <sub>2</sub> O/50% ME OH
Order ID	:MTFA33619				
Name	:CLE45 peptide				
Sequence	:RRVRRGSDPIHN (Acetate Salt)				
Lot.No	:MTFA33619-251120				
Theoretical	:1462.62				
Observed	:1462.95				