
CERTIFICATE OF ANALYSIS

Product Name	Apolipoprotein A-I-mimetic (18A), Cat.#: 318917 (TFA removed)
Lot No.	MTFA32422-0212
Sequence	Ac-DWFKAFYDKVAEKFKEAF-NH2 (HCl Salt)
Dissolution condition	100%H ₂ O
Length	18AA
Modification	HCl Salt
Molecular Weight (MW)	2310.60
Storage	-20°C

Test Items	Specifications	Results
MW by MS	2311.20	Conforms
Purity by HPLC	>95%	96.219%
Peptide content	N/A	N/A
Moisture content	N/A	N/A
Acetic acid content	N/A	N/A
Appearance	White to off-white lyophilized powder	Conforms
Quantity	30mg	5.0mg*6

NovoPro Bioscience Inc. (hereafter NovoPro) warrants material of said quality at the time of sale. It is the sole responsibility of the customers to determine the adequacy of all materials for any intended or specific purpose or use. NovoPro's sole obligation is to replace the material up to the extent of the purchase price. This warranty applies only to products in original packaging and does not apply to a product which has been tampered with or altered in any way in or which has been misused or damaged by accident or negligence. All claims must be received writing (by fax or email) within 30 days from date when product arrive at the destination city and failure to do so shall constitute a waiver by customers for any and all such claims.

Certified by:



Quality Assurance Department

Feb/14/2025

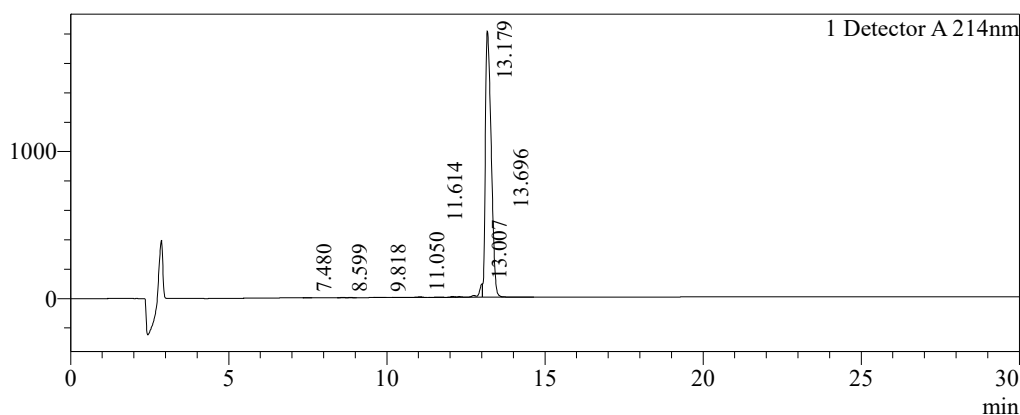


Sample Information

Order ID :MTFA32422
 Name :Apolipoprotein A-I-mimetic (18A) peptide
 Sequence :Ac-DWFKAFYDKVAEKFEAF-NH2 (HCl Salt)
 Lot. No :MTFA32422-0212
 Pump A :0.1%Trifluoroacetic in 100% water
 Pump B :0.1%Trifluoroacetic in 100% acetonitrile
 Total Flow :1ml/min
 Wavelength :214nm
 Analytical column type :Kromasil 100-5-C18 (4.6*250mm*5 µm)
 Dissolution method :100%H2O
 Inj. Volume : 25ul
 Time Module Action Value
 0.01 Pumps B.Conc 35
 30.00 Pumps B.Conc 65
 33.00 Pumps B.Conc 100
 38.00 Pumps B.Conc 100
 40.00 Pumps B.Conc 35
 50.00 Controller Stop

Chromatogram

mV

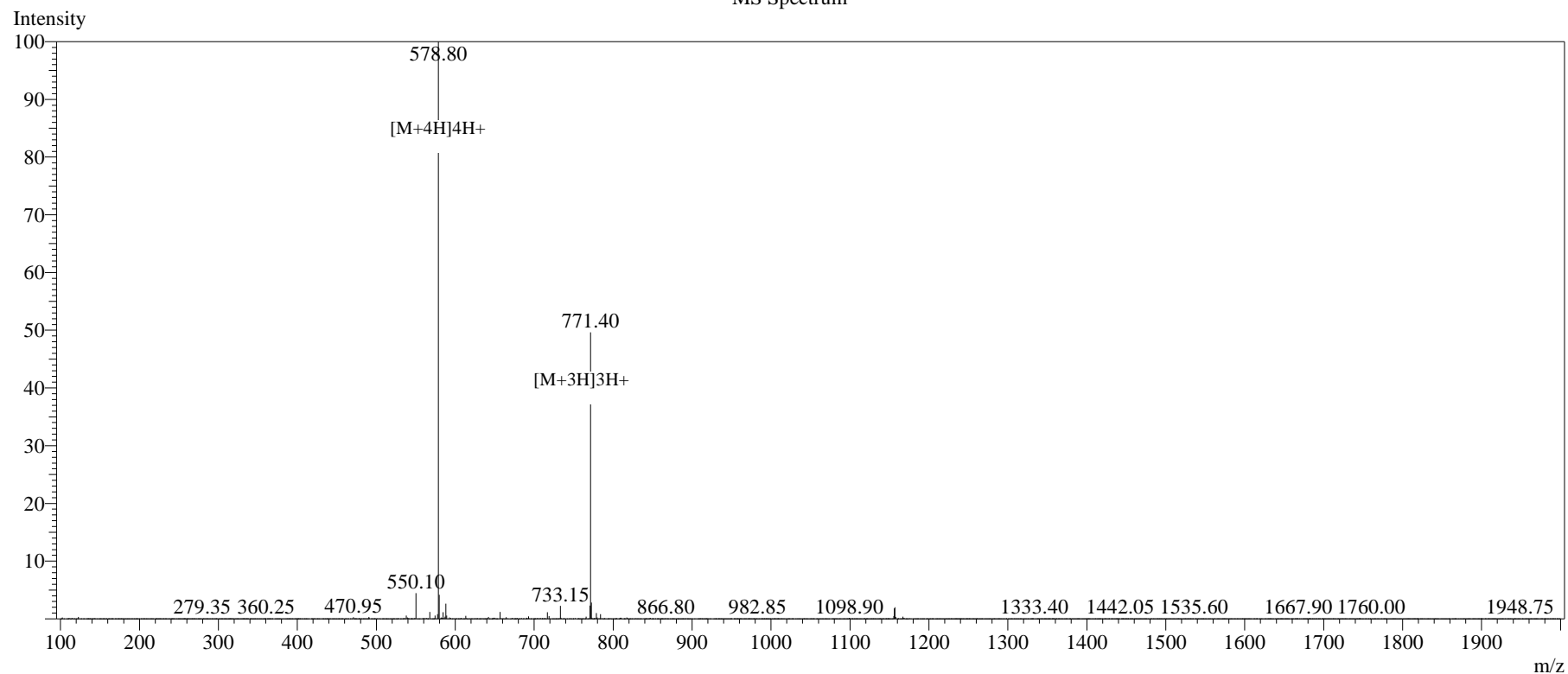


Peak Table

Detector A 214nm

Peak#	Ret. Time	Area	Height	Area%
1	7.480	2978	340	0.012
2	8.599	18412	1347	0.076
3	9.818	9732	780	0.040
4	11.050	55564	3585	0.230
5	11.614	14079	967	0.058
6	13.007	770000	89797	3.182
7	13.179	23285666	1810359	96.219
8	13.696	44217	2392	0.183
Total		24200648	1909568	100.000

MS Spectrum



Sample Information

Dissolution method	:15%ACN+85%H2O	Interface	:ESI	Prerod Bias	:+4.5kv
Date Acquired	:2025/02/13 13:25:12	Nebulizing Gas Flow	:1.50L/min	Detector	:-0.2kv
Injection Volume	:0.2ul	CDL Temp	:250°C	T.Flow	:0.2ml/min
Block Temp	:200	CDL Volt	:0v	B.conc	:50% H2O/50% MEOH

Order ID	:MTFA32422
Name	:Apolipoprotein A-I-mimetic (18A) peptide
Sequence	:Ac-DWFKAFYDKVAEKFKAEAF-NH2 (HCl
Lot.No	Salt) :MTFA32422-0212
Theoretical	:2310.60
Observed	:2311.20