

**CERTIFICATE OF ANALYSIS**

<b>Product Name</b>	Alpha-MSH peptide, Cat.#: 302923
<b>Lot No.</b>	MTFA30076-0410
<b>Sequence</b>	SYAMEHFRWGKPV-NH2
<b>Dissolution condition</b>	100%H2O
<b>Length</b>	13AA
<b>Modification</b>	N/A
<b>Molecular Weight (MW)</b>	1606.84
<b>Storage</b>	-20°C

<b>Test Items</b>	<b>Specifications</b>	<b>Results</b>
<b>MW by MS</b>	1606.18	Conforms
<b>Purity by HPLC</b>	>95%	97.742%
<b>Peptide Content</b>	N/A	N/A
<b>Moisture content</b>	N/A	N/A
<b>Acetic acid content</b>	N/A	N/A
<b>Appearance</b>	White to off-white lyophilized powder	Conforms
<b>Quantity</b>	10mg	5.0mg*2

NovoPro Bioscience Inc. (hereafter NovoPro) warrants material of said quality at the time of sale. It is the sole responsibility of the customers to determine the adequacy of all materials for any intended or specific purpose or use. NovoPro's sole obligation is to replace the material up to the extent of the purchase price. This warranty applies only to products in original packaging and does not apply to a product which has been tampered with or altered in any way in or which has been misused or damaged by accident or negligence. All claims must be received writing (by fax or email) within 30 days from date when product arrive at the destination city and failure to do so shall constitute a waiver by customers for any and all such claims.

Certified by:



Quality Assurance Department

Apr/25/2023

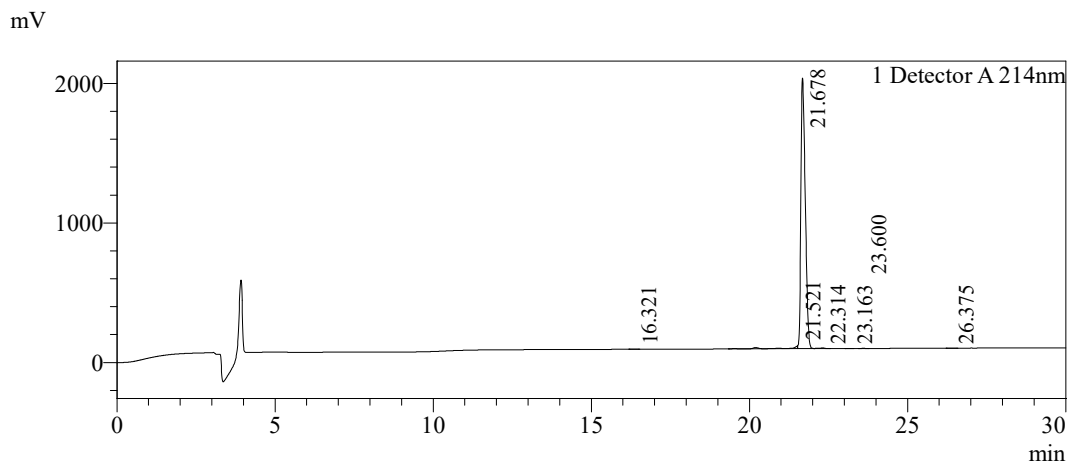


### Sample Information

Order ID :MTFA30076  
 Name :Alpha-MSH peptide, Cat.#: 302923  
 Sequence :SYAMEHFRWGKPV-NH2  
 Lot. No :MTFA30076-0410  
 Pump A :0.1%Trifluoroacetic in 100% water  
 Pump B :0.1%Trifluoroacetic in 100% acetonitrile  
 Total Flow :1ml/min  
 Wavelength :214nm  
 Analytical column type :Shim-pack GIST C18(4.6\*250mm\*5um)  
 Dissolution method :100%H2O  
 Inj. Volume : 25ul  

Time	Module	Action	Value
0.01	Pumps	B.Conc	15
30.00	Pumps	B.Conc	45
33.00	Pumps	B.Conc	100
38.00	Pumps	B.Conc	100
40.00	Pumps	B.Conc	15
50.00	Controller	Stop	

### Chromatogram

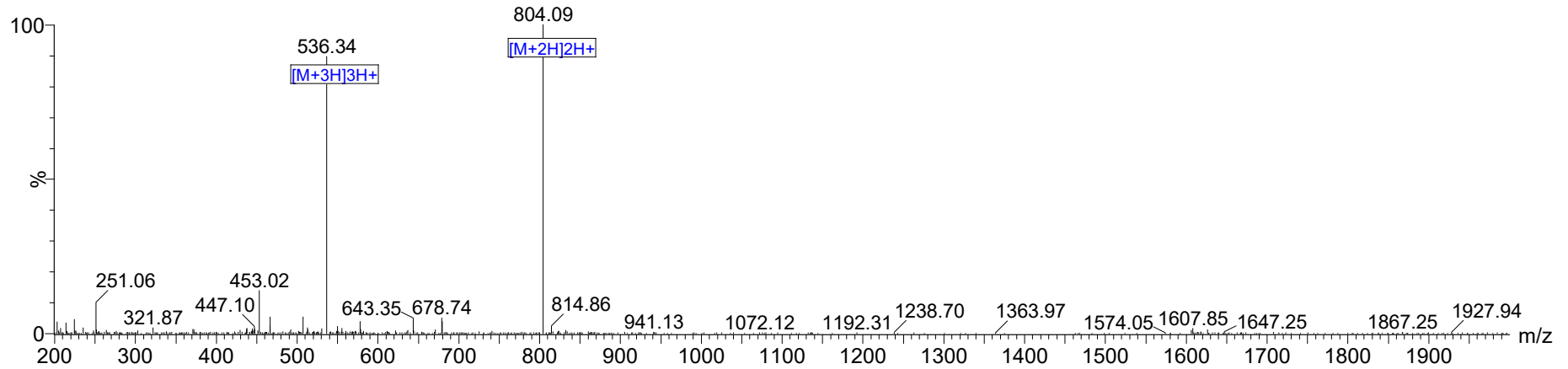


### Peak Table

#### Detector A 214nm

Peak#	Ret. Time	Area	Height	Area%
1	16.321	7683	1088	0.040
2	21.521	342487	19722	1.780
3	21.678	18807358	1939489	97.742
4	22.314	66463	5357	0.345
5	23.163	4151	540	0.022
6	23.600	8599	1127	0.045
7	26.375	5125	621	0.027
Total		19241867	1967945	100.000

## MS Spectrum

 Positive  
Intensity


Dissolution method	:15%ACN+85%H2O	Interface	:ESI	Prerod Bias	:+4.5kv
Date Acquired	:2023/4/25 21:05:58	Nebulizing Gas Flow	:1.50L/min	Detector	:-0.2kv
Injection Volume	:0.2ul	CDL Temp	:250C	T.Flow	:0.2ml/min
Block Temp	:200	CDL Volt	:0v	B.conc	:50%H2O/50%MEOH

Order ID	: MTF A30076
Name	: Alpha-MSH peptide, Cat.#: 302923
Sequence	: SYAMEHFRWGKPV-NH2
Lot.No	: MTF A30076-0410
Theoretical	: 1606.84
Observed	: 1606.18