

# Human LGALS1 (His tag) recombinant protein



Catalog Number: 519601

## General Information

### Gene Name Synonym

Galectin-1, Gal-1, 14 kDa Laminin-Binding Protein, HLBP14, 14 kDa Lectin, Beta-Galactoside-Binding Lectin L-14-I, Galaptin, HBL, HPL, Lactose-Binding Lectin 1, Lectin Galactoside-Binding Soluble 1, Putative MAPK-Activating Protein PM12, S-Lac Lectin 1, LGALS1

### Protein Construction

A DNA sequence encoding the Human LGALS1 Ala2-Asp135 is expressed with a 6His tag at the C-terminus.

### Organism

Human

### Expression Host

E. coli

## QC Testing

### Purity

>95% as determined by SDS-PAGE.

### Endotoxin

<1.0 EU per  $\mu\text{g}$  protein as determined by the LAL method.

### Stability

Store for up to 12 months at  $-20^{\circ}\text{C}$  to  $-80^{\circ}\text{C}$  as lyophilized powder. Aliquots of reconstituted

samples are stable at  $< -20^{\circ}\text{C}$  for 3 months.

### Formulation

Lyophilized from a  $0.2\ \mu\text{m}$  filtered solution of 10mM PB, 200mM NaCl, 2mM DTT, pH 7.0.

## Usage Guide

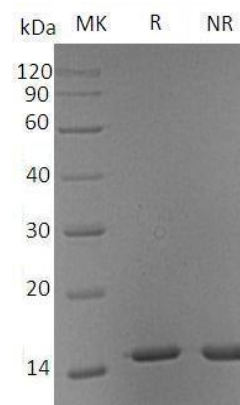
### Storage

Lyophilized protein should be stored at  $< -20^{\circ}\text{C}$ , though stable at room temperature for 3 weeks. Reconstituted protein solution can be stored at  $4-7^{\circ}\text{C}$  for 2-7 days.

### Reconstitution

Always centrifuge tubes before opening. Do not mix by vortex or pipetting. It is not recommended to reconstitute to a concentration less than  $100\ \mu\text{g}/\text{ml}$ . Dissolve the lyophilized protein in ddH<sub>2</sub>O. Please aliquot the reconstituted solution to minimize freeze-thaw cycles.

## SDS-PAGE



Human LGALS1 (His tag) recombinant protein