

Human ADAMDEC1 (His tag) recombinant protein



Catalog Number: 519457

General Information

Gene Name Synonym

ADAM DEC1, a disintegrin and metalloproteinase domain-like protein decysin-1, ADAM-like protein decysin-1

Protein Construction

A DNA sequence encoding the Human ADAMDEC1 Lys206-Glu470 is expressed with a 6His tag at the C-terminus.

Organism

Human

Expression Host

Human Cells

QC Testing

Purity

>95% as determined by SDS-PAGE.

Endotoxin

<1.0 EU per μg protein as determined by the LAL

method.

Stability

Store for up to 6 months at -20°C

Formulation

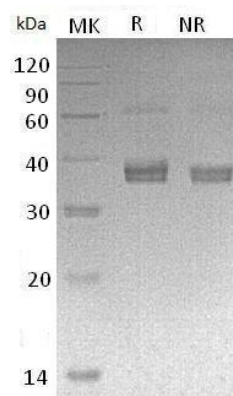
Supplied as a $0.2\ \mu\text{m}$ filtered solution of 20mM TrisHCl, 150mM NaCl, 1mM ZnCl₂, pH7.5.

Usage Guide

Storage

Store at $<-20^{\circ}\text{C}$, minimize freeze-thaw cycles.

SDS-PAGE



Human ADAMDEC1 (His tag) recombinant protein