

General Information

Gene Name Synonym

14 kDa lectin; Beta-galactoside-binding lectin L-14-I; Galaptin; Lactose-binding lectin 1; Lectin galactoside-binding soluble 1; RL 14.5; S-Lac lectin 1

Protein Construction

A DNA sequence encoding the rat IL20 (P11762) (Leu25-Leu176) was expressed and purified.

Organism

Rat

Expression Host

E. coli

QC Testing

Purity

> 85 % as determined by SDS-PAGE

Endotoxin

Please contact us for more information.

Stability

Samples are stable for up to twelve months from date of receipt at -70°C

Predicted N terminal

Leu 25

Molecular Mass

The recombinant rat IL20 consists of 153 amino

acids and has a predicted molecular mass of 17.7 kDa. As a result of glycosylation, the apparent molecular mass of the recombinant protein is approximately 17 kDa in SDS-PAGE under reducing conditions.

Formulation

Lyophilized from sterile PBS, 20% Glycerol, pH 7.4.

1. 5 % trehalose and mannitol are added as protectants before lyophilization.
2. Please contact us for any concerns or special requirements.

Usage Guide

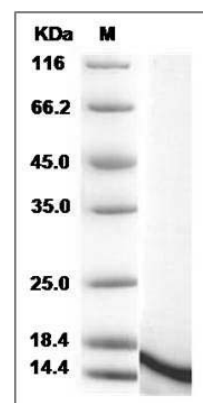
Storage

Store it under sterile conditions at -20°C to -80°C. It is recommended that the protein be aliquoted for optimal storage. Avoid repeated freeze-thaw cycles.

Reconstitution

Adding sterile water, prepare a stock solution of 0.25 mg/ml. Concentration is measured by UV-Vis.

SDS-PAGE



Rat IL20 / Interleukin-20 Protein SDS-PAGE