

Human METAP1 (His Tag) recombinant protein



Catalog Number: 504051

General Information

Gene Name Synonym

Peptidase M 1

Protein Construction

A DNA sequence encoding the human METAP1 (NP_055958.2) (His52-Phe386) was expressed with a polyhistidine tag at the C-terminus and an initial Met at the N-terminus.

Organism

Human

Expression Host

Baculovirus-Insect Cells

QC Testing

Purity

> 95 % as determined by SDS-PAGE.

Endotoxin

< 1.0 EU per μ g protein as determined by the LAL method.

Stability

Samples are stable for up to twelve months from date of receipt at -70°C

Predicted N terminal

Met

Molecular Mass

The recombinant human METAP1 consists 347 amino acids and predicts a molecular mass of 39.3 kDa.

Formulation

Lyophilized from sterile 20 mM Tris, 500 mM NaCl, pH 8.0, 10 % glycerol.

1. 5 % trehalose and mannitol are added as protectants before lyophilization.

2. Please contact us for any concerns or special requirements.

Usage Guide

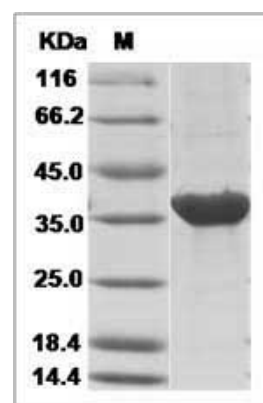
Storage

Store it under sterile conditions at -20°C to -80°C. It is recommended that the protein be aliquoted for optimal storage. Avoid repeated freeze-thaw cycles.

Reconstitution

Adding sterile water, prepare a stock solution of 0.25 mg/ml. Concentration is measured by UV-Vis.

SDS-PAGE



Human METAP1 Protein (His Tag)