

# Human Latexin (His Tag) recombinant protein



Catalog Number: 503652

## General Information

### Gene Name Synonym

Endogenous carboxypeptidase inhibitor; Protein MUM; Tissue carboxypeptidase inhibitor

### Protein Construction

A DNA sequence encoding the human Latexin (NP\_064554.3) (Glu 2-Glu222) was expressed, fused with a polyhistidine tag at the N-terminus.

### Organism

Human

### Expression Host

E. coli

## QC Testing

### Purity

> 97 % as determined by SDS-PAGE

### Endotoxin

Please contact us for more information.

### Stability

Samples are stable for up to twelve months from date of receipt at -70°C

### Predicted N terminal

Met

### Molecular Mass

The recombinant human LXN consists of 230

amino acids and predicts a molecular mass of 26.8 kDa which is also estimated by SDS-PAGE.

### Formulation

Lyophilized from sterile 20mM HEPES, 0.1M KCl, pH 7.5

1. 5 % trehalose and mannitol are added as protectants before lyophilization.

2. Please contact us for any concerns or special requirements.

## Usage Guide

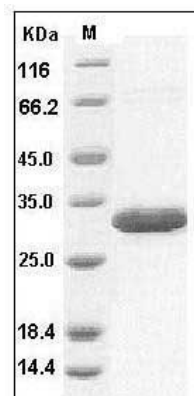
### Storage

Store it under sterile conditions at -20°C to -80°C. It is recommended that the protein be aliquoted for optimal storage. Avoid repeated freeze-thaw cycles.

### Reconstitution

Adding sterile water, prepare a stock solution of 0.25 mg/ml. Concentration is measured by UV-Vis.

### SDS-PAGE



Human Latexin / LXN / TCI Protein (His Tag) SDS-PAGE