

General Information

Gene Name Synonym

S-100 protein alpha chain; S-100 protein subunit alpha; S100 calcium-binding protein A1

Protein Construction

A DNA sequence encoding the human S100A1 (NP_006262.1) (Met 1-Ser 94) was expressed.

Organism

Human

Expression Host

E. coli

QC Testing

Activity

1. Measured by its binding ability in a functional ELISA.
2. Immobilized recombinant human Fc-S100B (Cat:504144) at 10 µg/mL (100 µl/well) can bind biotinylated human S100A1 (Cat:503506) with a linear range of 15.6-250 ng/mL.
3. Measured by its ability to bind human His-S100B (Cat:500182) in functional ELISA.

Purity

> 97 % as determined by SDS-PAGE

Endotoxin

Please contact us for more information.

Stability

Samples are stable for up to twelve months from date of receipt at -70°C

Predicted N terminal

Met 1

Molecular Mass

The recombinant human S100A1 consists of 94 amino acids and has a predicted molecular mass of 10.5 kDa.

Formulation

Lyophilized from sterile PBS, pH 7.4

1. 5 % trehalose and mannitol are added as protectants before lyophilization.

2. Please contact us for any concerns or special requirements.

Usage Guide

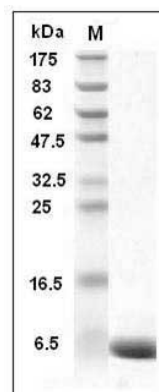
Storage

Store it under sterile conditions at -20°C to -80°C. It is recommended that the protein be aliquoted for optimal storage. Avoid repeated freeze-thaw cycles.

Reconstitution

Adding sterile water, prepare a stock solution of 0.25 mg/ml. Concentration is measured by UV-Vis.

SDS-PAGE



Human S100A1 Protein SDS-PAGE