

General Information

Protein Construction

A DNA sequence encoding the extracellular domain of mouse CLEC14A (NP_080085.3) (Met 1-Thr 386) was expressed, fused with a polyhistidine tag at the C-terminus.

Organism

Mouse

Expression Host

Human Cells

QC Testing

Purity

> 95 % as determined by SDS-PAGE

Endotoxin

< 1.0 EU per μg of the protein as determined by the LAL method

Stability

Samples are stable for up to twelve months from date of receipt at -70°C

Predicted N terminal

Glu 22

Molecular Mass

The recombinant mouse CLEC14A consists of 376 amino acids and has a predicted molecular mass of 40.6 kDa. Due to glycosylation, rm CLEC14A

migrates as an approximately 75 kDa band in SDS-PAGE under reducing conditions.

Formulation

Lyophilized from sterile PBS, pH 7.4

1. 5 % trehalose and mannitol are added as protectants before lyophilization.

2. Please contact us for any concerns or special requirements.

Usage Guide

Storage

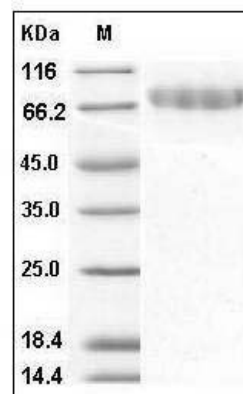
Store it under sterile conditions at -20°C to -80°C .

It is recommended that the protein be aliquoted for optimal storage. Avoid repeated freeze-thaw cycles.

Reconstitution

Adding sterile water, prepare a stock solution of 0.25 mg/ml. Concentration is measured by UV-Vis.

SDS-PAGE



Mouse CLEC14A / EGFR-5 Protein (His Tag) SDS-PAGE