

Human DEPE2 (Fc Tag) recombinant protein



Catalog Number: 502841

General Information

Protein Construction

A DNA sequence encoding the human DPEP2 (AAH24021.1) (Met1-Ser376) was expressed, fused with the Fc region of human IgG1 at the C-terminus.

Organism

Human

Expression Host

Human Cells

QC Testing

Purity

> 95 % as determined by SDS-PAGE

Endotoxin

< 1.0 EU per µg of the protein as determined by the LAL method

Stability

Samples are stable for up to twelve months from date of receipt at -70°C

Predicted N terminal

Ala 33

Molecular Mass

The recombinant human DPEP2/Fc is a disulfide-linked homodimer. The reduced monomer comprises 585 amino acids and has a predicted

molecular mass of 65 kDa. The apparent molecular mass of the protein is approximately 43-49 kDa in SDS-PAGE under reducing conditions.

Formulation

Lyophilized from sterile PBS, pH 7.4

1. 5 % trehalose and mannitol are added as protectants before lyophilization.

2. Please contact us for any concerns or special requirements.

Usage Guide

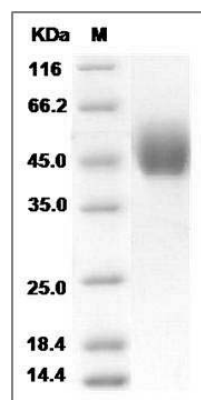
Storage

Store it under sterile conditions at -20°C to -80°C. It is recommended that the protein be aliquoted for optimal storage. Avoid repeated freeze-thaw cycles.

Reconstitution

Adding sterile water, prepare a stock solution of 0.25 mg/ml. Concentration is measured by UV-Vis.

SDS-PAGE



Human MBD2 / DPEP2 Protein (Fc Tag) SDS-PAGE