

Human BACE1 recombinant protein



Catalog Number: 502604

General Information

Protein Construction

The mature form of human BACE1 (NP_036236.1) extracellular domain (Met1-Thr 457) with a quinary-aa peptide (DDDDK) at the C-terminus was expressed and purified.

Organism

Human

Expression Host

Human Cells

QC Testing

Activity

Measured by its ability to cleave a fluorescent peptide substrate Mca-Ser-Glu-Val-Asn-Leu-Asp-Ala-Glu-Phe-Arg-Lys(Dpn)-Arg-Arg-NH₂ (Catalog# ES004, R&D Systems). Cleavage of ES004 can be measured using excitation and emission wavelengths of 320 and 405 nm, respectively. The specific activity is >0.5 pmoles/min/μg.

Purity

> 95 % as determined by SDS-PAGE

Endotoxin

< 1.0 EU per μg of the protein as determined by the LAL method

Stability

Samples are stable for up to twelve months from date of receipt at -70°C

Predicted N terminal

Thr 22

Molecular Mass

The recombinant human BACE1 consists of 442 amino acids and has a calculated molecular mass of 49 kDa. As a result of glycosylation, the rhBACE1 migrates as an approximately 65 kDa protein in SDS-PAGE under reducing conditions.

Formulation

Lyophilized from sterile 50mM Tris, 100mM NaCl, pH 8.0

1. 5 % trehalose and mannitol are added as protectants before lyophilization.

2. Please contact us for any concerns or special requirements.

Usage Guide

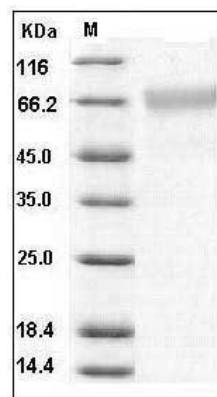
Storage

Store it under sterile conditions at -20°C to -80°C. It is recommended that the protein be aliquoted for optimal storage. Avoid repeated freeze-thaw cycles.

Reconstitution

Adding sterile water, prepare a stock solution of 0.25 mg/ml. Concentration is measured by UV-Vis.

SDS-PAGE



Human BACE1 / ASP2 Protein SDS-PAGE