

Human ASAM / CLMP (His Tag) recombinant protein



Catalog Number: 502146

General Information

Gene Name Synonym

Adipocyte adhesion molecule; Coxsackie- and adenovirus receptor-like membrane protein

Protein Construction

A DNA sequence encoding the extracellular domain of human ASAM (NP_079045.1) precursor (Met 1-Met 233) was expressed with a C-terminal polyhistidine tag.

Organism

Human

Expression Host

Human Cells

QC Testing

Activity

Measured by the ability of the immobilized protein to support the adhesion of the HUVEC human umbilical vein endothelial cell line. When 4 x 10E4 cells/well are added to human ASAM coated plates (30 µg/ml, 100 µl/well), approximately > 40 % will adhere after one hour at 37 °C.

Purity

> 97 % as determined by SDS-PAGE

Endotoxin

< 1.0 EU per µg of the protein as determined by the LAL method

Stability

Samples are stable for up to twelve months from date of receipt at -70°C

Predicted N terminal

Gly 18

Molecular Mass

The secreted recombinant human ASAM comprises 227 amino acids and predicts a molecular mass of 25.8 kDa. It migrates as an approximately 32-35 kDa band in SDS-PAGE under reducing conditions.

Formulation

Lyophilized from sterile PBS, pH 7.4
1. 5 % trehalose and mannitol are added as protectants before lyophilization.
2. Please contact us for any concerns or special requirements.

Usage Guide

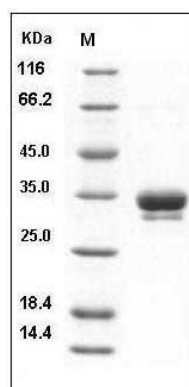
Storage

Store it under sterile conditions at -20°C to -80°C. It is recommended that the protein be aliquoted for optimal storage. Avoid repeated freeze-thaw cycles.

Reconstitution

Adding sterile water, prepare a stock solution of 0.25 mg/ml. Concentration is measured by UV-Vis.

SDS-PAGE



Human ASAM / CLMP Protein (His Tag) SDS-PAGE