

General Information

Gene Name Synonym

Angiotensinogenase

Protein Construction

A DNA sequence encoding the human Renin (NP_000528.1) precursor (Met 1-Arg 406) was expressed with a polyhistidine tag at the C-terminus.

Organism

Human

Expression Host

Human Cells

QC Testing

Activity

Measured by its binding ability in a functional ELISA.

Immobilized human RENIN-His (Cat: 501755) at 10 µg/ml (100 µl/well) can bind biotinylated human AGT-His (Cat: 501652) with a linear range of 0.156-5.0 µg/ml.

Purity

> 95 % as determined by SDS-PAGE

Endotoxin

< 1.0 EU per µg of the protein as determined by the LAL method

Stability

Samples are stable for up to twelve months from date of receipt at -70°C

Predicted N terminal

Leu 24

Molecular Mass

The secreted recombinant human Renin is a monomeric protein after cleavage of the signal peptide. The pro form consists of 394 amino acids and predicts a molecular mass of 43.7 kDa. In SDS-PAGE under reducing conditions, it migrates with the apparent molecular mass of 50 kDa due to glycosylation.

Formulation

Lyophilized from sterile 25mM MES, 150mM NaCl, pH6.5

1. 5 % trehalose and mannitol are added as protectants before lyophilization.
2. Please contact us for any concerns or special requirements.

Usage Guide

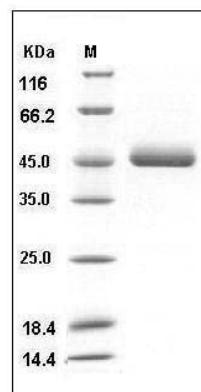
Storage

Store it under sterile conditions at -20°C to -80°C. It is recommended that the protein be aliquoted for optimal storage. Avoid repeated freeze-thaw cycles.

Reconstitution

Adding sterile water, prepare a stock solution of 0.25 mg/ml. Concentration is measured by UV-Vis.

SDS-PAGE



Human Renin Protein (His Tag) SDS-PAGE