

Mouse CCL20/MIP-3 alpha/MIP3A (His Tag) recombinant protein



Catalog Number: 501741

General Information

Gene Name Synonym

Beta-chemokine exodus-1; CC chemokine LARC; CC chemokine ST38; Liver and activation-regulated chemokine; Macrophage inflammatory protein 3 alpha; Small-inducible cytokine A20

Protein Construction

A DNA sequence encoding the mouse CCL20 (O89093-1) (Met 1-Met 97) was expressed with a C-terminal polyhistidine tag.

Organism

Mouse

Expression Host

Baculovirus-Insect Cells

QC Testing

Purity

> 90 % as determined by SDS-PAGE

Endotoxin

< 1.0 EU per μg of the protein as determined by the LAL method

Stability

Samples are stable for up to twelve months from date of receipt at -70°C

Predicted N terminal

Ala 28

Molecular Mass

The secreted recombinant mouse CCL20 consists of 80 amino acids and has a calculated molecular mass of 9.3 kDa. It migrates as an approximately 14 kDa band in SDS-PAGE under reducing conditions.

Formulation

Lyophilized from sterile 20mM Tris, 500mM NaCl, pH 7.4, 10% gly

1. 5 % trehalose and mannitol are added as protectants before lyophilization.

2. Please contact us for any concerns or special requirements.

Usage Guide

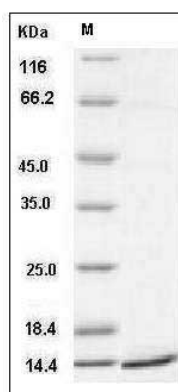
Storage

Store it under sterile conditions at -20°C to -80°C . It is recommended that the protein be aliquoted for optimal storage. Avoid repeated freeze-thaw cycles.

Reconstitution

Adding sterile water, prepare a stock solution of 0.25 mg/ml. Concentration is measured by UV-Vis.

SDS-PAGE



Mouse CCL20 / MIP-3 alpha Protein (His Tag)
SDS-PAGE