

## General Information

### Gene Name Synonym

14 kDa laminin-binding protein; 14 kDa lectin; Beta-galactoside-binding lectin L-14-I; Galaptin; HBL; HPL; Lactose-binding lectin 1; Lectin galactoside-binding soluble 1; Putative MAPK-activating protein PM12; S-Lac lectin 1

### Protein Construction

A DNA sequence encoding the human Galectin 1 (NP\_002296.1) (Met 1-Asp135) was expressed.

### Organism

Human

### Expression Host

E. coli

## QC Testing

### Activity

Measured by its ability to agglutinate human red blood cells. The ED<sub>50</sub> for this effect is typically 0.5-3 µg/ml.

### Purity

> 98 % as determined by SDS-PAGE

### Endotoxin

Please contact us for more information.

### Stability

Samples are stable for up to twelve months from date of receipt at -70°C

### Predicted N terminal

Ala 2

### Molecular Mass

The recombinant human Galectin 1 comprises 134 amino acids without the initiator methonine, and predicts a molecular mass of 15 kDa as estimated in SDS-PAGE under reducing conditions.

### Formulation

Lyophilized from sterile PBS, pH 7.4

1. 5 % trehalose and mannitol are added as protectants before lyophilization.

2. Please contact us for any concerns or special requirements.

## Usage Guide

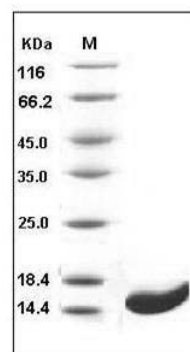
### Storage

Store it under sterile conditions at -20°C to -80°C. It is recommended that the protein be aliquoted for optimal storage. Avoid repeated freeze-thaw cycles.

### Reconstitution

Adding sterile water, prepare a stock solution of 0.25 mg/ml. Concentration is measured by UV-Vis.

### SDS-PAGE



Human Galectin-1 / LGALS1 Protein SDS-PAGE