

General Information

Gene Name Synonym

Stimulator of Fe transport; UBC4/5 homolog; UbcH5; Ubiquitin carrier protein D1; Ubiquitin-conjugating enzyme E2(17)KB 1; Ubiquitin-conjugating enzyme E2-17 kDa 1; Ubiquitin-protein ligase D1

Protein Construction

A DNA sequence encoding the human UBE2D1 (P51668) (Ala 2-Met 147) was expressed, with a polyhistidine tag at the N-terminus.

Organism

Human

Expression Host

E. coli

QC Testing

Purity

> 90 % as determined by SDS-PAGE

Endotoxin

Please contact us for more information.

Stability

Samples are stable for up to twelve months from date of receipt at -70°C

Predicted N terminal

Met

Molecular Mass

The recombinant human UBE2D1 consisting of 161 amino acids and has a calculated molecular mass of 18.3 kDa. It migrates as an approximately 16 kDa band in SDS-PAGE under reducing conditions.

Formulation

Lyophilized from sterile 25mM Tris, 100mM NaCl, 20% glycerol, 0.05% Tween

1. 5 % trehalose and mannitol are added as protectants before lyophilization.

2. Please contact us for any concerns or special requirements.

Usage Guide

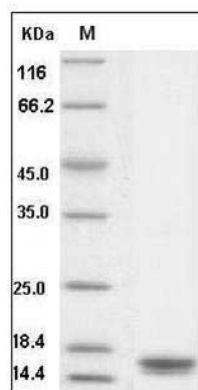
Storage

Store it under sterile conditions at -20°C to -80°C. It is recommended that the protein be aliquoted for optimal storage. Avoid repeated freeze-thaw cycles.

Reconstitution

Adding sterile water, prepare a stock solution of 0.25 mg/ml. Concentration is measured by UV-Vis.

SDS-PAGE



Human UBE2D1 / UBCH5 Protein (His Tag) SDS-PAGE