

# Human CCL20/MIP-3 alpha/MIP3A (His Tag) recombinant protein



Catalog Number: 501148

## General Information

### Gene Name Synonym

Beta-chemokine exodus-1; CC chemokine LARC;  
Liver and activation-regulated chemokine;  
Macrophage inflammatory protein 3 alpha; Small-  
inducible cytokine A20; CCL20(1-67);  
CCL20(1-64); CCL20(2-70)

### Protein Construction

A DNA sequence encoding the human CCL20  
(P78556-1) (Ala27-Met96) was expressed with a  
polyhistidine tag at the N-terminus.

### Organism

Human

### Expression Host

E. coli

## QC Testing

### Purity

> 90 % as determined by SDS-PAGE

### Endotoxin

Please contact us for more information.

### Stability

Samples are stable for up to twelve months from  
date of receipt at -70°C

### Predicted N terminal

His

### Molecular Mass

The recombinant human CCL20 consists of 87  
amino acids and predicts a molecular mass of 10.2  
KDa. It migrates as an approximately 10 KDa band  
in SDS-PAGE under reducing conditions.

### Formulation

Lyophilized from sterile PBS, pH 7.4.

1. 5 % trehalose and mannitol are added as  
protectants before lyophilization.

2. Please contact us for any concerns or special  
requirements.

## Usage Guide

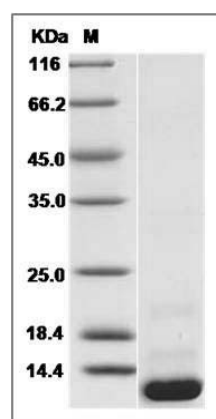
### Storage

Store it under sterile conditions at -20°C to -80°C.  
It is recommended that the protein be aliquoted  
for optimal storage. Avoid repeated freeze-thaw  
cycles.

### Reconstitution

Adding sterile water, prepare a stock solution of  
0.25 mg/ml. Concentration is measured by UV-Vis.

### SDS-PAGE



Human CCL20 / MIP-3 alpha Protein (His Tag)  
SDS-PAGE