

Anti-GPM6B antibody

Catalog Number: 175463

Product name

Anti-GPM6B antibody

Specificity

Human, Mouse, Rat, Pig, Horse

Antibody description

Rabbit polyclonal antibody to GPM6B

Preparation

This antigen of this antibody was klh conjugated synthetic peptide derived from human gpm6b 1-100/265

Formulation

Liquid, 0.01M TBS(pH7.4) with 1% BSA, 0.03% Proclin300 and 50% Glycerol.

Storage

Store at -20°C for one year. Avoid repeated freeze/thaw cycles. The lyophilized antibody is stable at room temperature for at least one month and for greater than a year when kept at -20°C. When reconstituted in sterile pH 7.4 0.01M PBS or diluent of antibody the antibody is stable for at least two weeks at 2-4°C.

Clonality

Polyclonal

Ig Type

Rabbit IgG

Applications

WB, FC

Dilutions

WB:1:500-2000

FC:1µg/Test

Validations

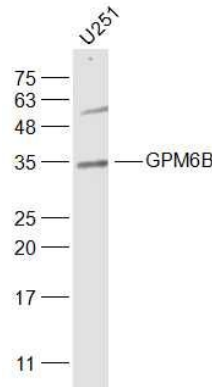


Fig1: Sample:; U251(Human) Cell Lysate at 30 ug; Primary: Anti-GPM6B at 1/1000 dilution; Secondary: IRDye800CW Goat Anti-Rabbit IgG at 1/20000 dilution; Predicted band size: 29 kD; Observed band size: 34 kD

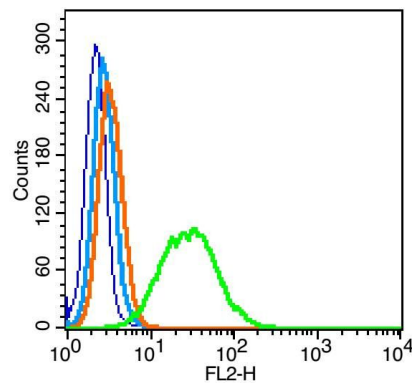


Fig2: Blank control: RSC96(blue), the cells were fixed with 2% paraformaldehyde (10 min) and then permeabilized with ice-cold 90% methanol for 30 min on ice.; Isotype Control Antibody: Rabbit IgG(orange) ; Secondary Antibody: Goat anti-rabbit IgG-PE(white blue), Dilution: 1:200 in 1 X PBS containing 0.5% BSA ; Primary Antibody Dilution: 0.2µg in 100 µL1X PBS containing 0.5%

Anti-GPM6B antibody

Catalog Number: 175463

Fig3: Sample: Brain (Mouse) Lysate at 40 ug;
Primary: Anti-GPM6B at 1/300 dilution;
Secondary: IRDye800CW Goat Anti-Rabbit IgG at
1/20000 dilution; Predicted band size: 29 kD;
Observed band size: 36 kD

