

Anti-ERMN antibody



Catalog Number: 175405

Product name

Anti-ERMN antibody

Specificity

Human, Mouse, Rat, Cow, Rabbit, Sheep

Antibody description

Rabbit polyclonal antibody to ERMN

Preparation

This antigen of this antibody was klh conjugated synthetic peptide derived from human ermin 201-284/284

Formulation

Liquid, 0.01M TBS(pH7.4) with 1% BSA, 0.03% Proclin300 and 50% Glycerol.

Storage

Store at -20°C for one year. Avoid repeated freeze/thaw cycles. The lyophilized antibody is stable at room temperature for at least one month and for greater than a year when kept at -20°C. When reconstituted in sterile pH 7.4 0.01M PBS or diluent of antibody the antibody is stable for at least two weeks at 2-4°C.

Clonality

Polyclonal

Ig Type

IgG

Applications

WB, IHC-P

Dilutions

WB:1:500-2000

IHC-P:1:400-800

Validations

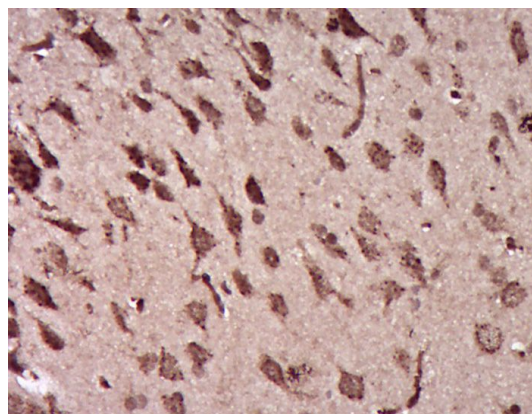
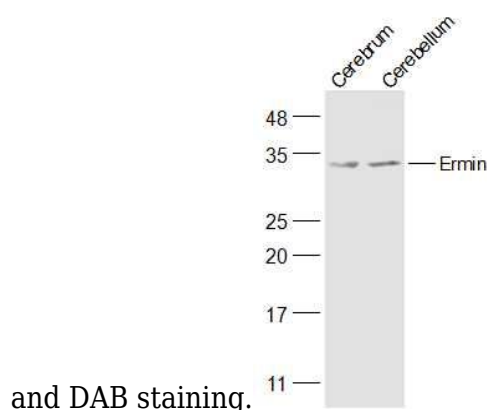


Fig1: Paraformaldehyde-fixed, paraffin embedded (Rat brain); Antigen retrieval by boiling in sodium citrate buffer (pH6.0) for 15min; Block endogenous peroxidase by 3% hydrogen peroxide for 20 minutes; Blocking buffer (normal goat serum) at 37°C for 30min; Antibody incubation with (Ermin) Polyclonal Antibody, Unconjugated at 1:400 overnight at 4°C, followed by operating according to SP Kit(Rabbit) (sp-0023) instructions



and DAB staining.

Fig2: Sample:; Cerebrum (Mouse) Lysate at 40 ug; Cerebellum (Mouse) Lysate at 40 ug; Primary: Anti-Ermin at 1/300 dilution; Secondary: IRDye800CW Goat Anti-Rabbit IgG at 1/20000 dilution; Predicted band size: 34 kD; Observed band size: 34 kD