

Anti-RRP4 Rabbit antibody



Catalog Number: 168837

Product name

Anti-RRP4 Rabbit antibody

Specificity

Human, Mouse, Rat

Antibody description

RRP4 Rabbit monoclonal antibody

Preparation

Antigen: A synthetic peptide of human RRP4

Formulation

50nM Tris-Glycine(pH 7.4), 0.15M NaCl, 40%Glycerol, 0.01% sodium azide and 0.05% BSA.

Storage

Store at 4°C short term. Store at -20°C long term. Avoid freeze / thaw cycle.

Clonality

Monoclonal

Ig Type

Rabbit IgG

Applications

WB, IHC-P, FC

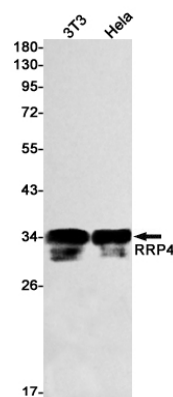
Dilutions

WB: 1/1000

IHC: 1/20

FC: 1/30

Validations



Western blot detection of RRP4 in 3T3,HeLa cell lysates using RRP4 Rabbit mAb(1:1000 diluted).Predicted band size:33kDa.Observed band size:33kDa.